

**FRIEDRICH AND SOPHIE
HOPPE
GERMAN IMMIGRANTS TO
JEFFERSON COUNTY,
NEBRASKA**

125TH ANNIVERSARY

August, 1994

©1994
Weldon Hoppe
Rt. 1 Box 110
Colon, NE 68018
402-647-4705

DEDICATION

This history of the Friedrich and Sophie Hoppe Family in Nebraska could be dedicated to the memory of many people. First, there is the pioneer family, who left family and friends and braved the unknown to begin a new life in a frontier land. Second, there are our parents, grandparents, brothers and sisters who have died before us and are particularly missed when we reminisce about family times. For me, this book is especially dedicated to the memory of one person who was the inspiration for this compilation: Olive E. Hoppe (Aunt Dolly).

As a young boy, I remember one reunion when she organized a "parade" of kids toting pinwheels and noisemakers. I always looked forward to the reunions and seeing her again. During her life, thirty-four reunions were held and she attended all but four. Her interest in the family was evident by the records of attendance and pictures she meticulously kept for each reunion.

It was only after her death that the extent of her interest and devotion to preserving our family history became known to me. Her many notebooks, scrapbooks, clippings and pictures were the inspiration for me to begin compiling and updating the work she had done.

Even as I contacted people to get information, nearly every conversation brought up the name "Olive." It seems that she had maintained contact with someone in each branch of the family. The information on the data sheets sent out to each family was based on data from Olive's notebooks. So, it is in memory of Aunt Dolly that I would like to dedicate this book. Following her example, do your part in preserving our Hoppe family history.

Weldon Hoppe

CONTENTS

INTRODUCTION	7
GERMAN HISTORY	8
Hannover, Prussia	8
Lower Saxony State	9
City of Hannover	10
Village of Bantorf	10
THE IMMIGRATION TRIP	15
THE NEBRASKA HOMESTEAD	19
THE PIONEER FAMILY	23
Heinrich Friedrich August (F. C.) Hoppe	26
Louise Dorothea Antoinette Hoppe	28
August Carl Friedrich Hoppe	30
Heinrich Albert Hoppe	32
Sabrea Sophie Hoppe	34
FAMILY BIBLE RECORDS	36
MISCELLANEOUS PICTURES	42
THE REUNIONS	56
GENEALOGY	57
NOTES	70
ADDRESS LIST	72
REFERENCES	75
JEFFERSON COUNTY AREA MAP	(fold-out)
	77

INTRODUCTION

This history documents the family of Heinrich Friedrich Christian and Engel Sophie Eleanora (Meier) Hoppe, along with their five children. Both husband and wife came from longstanding families of the area of Bantorf and Wichtringhausen, near Hannover, Germany. In 1869 they left what was then called Prussia and sailed to America and settled in Jefferson County, Nebraska.

Factors leading to their decision to make such a major change of life were political turmoil, family situations and the United States Homestead Act of 1862. They had hope of a better life in the United States and the realization they would not likely return to their former home, family and friends.

At the end of the book, a list of descendants is included, along with a current address list of all descendants for which contacts were available. From this immigrant couple, over 400 descendants were identified and are categorized as follows:

Children	5
Grandchildren	35
Great-Grandchildren	73
Great-Great-Grandchildren	151
Great-Great-Great-Grandchildren	153
Great-Great-Great-Great-Grandchildren	8
 Total	 425

GERMAN HISTORY

Hannover, Prussia

Our Hoppe family came from the area known as Hannover (see map below). It extended from the Harz Mountains on the south to the North Sea on the north, and from the Netherlands on the west to Prussian Saxony, Brandenburg, and Brunswick on the east. The city of Hannover was the capital. For most of the 1700's, both Hannover and Great Britain were ruled by King George I.



European Political Boundaries 1800's

Microsoft (R) Encarta. Copyright (c) 1993 Microsoft Corporation.

Copyright (c) 1993 Funk & Wagnall's Corporation

Just three years before our Hoppe family immigrated, the region was involved in a war with Austria, called the Seven Weeks' War (1866). The settlement of this war resulted in Hannover becoming a part of the Kingdom of Prussia. Hannover is now part of Lower Saxony State.¹

Lower Saxony State

Lower Saxony (German Niedersachsen) is bounded on the north by the North Sea and the states of Hamburg and Schleswig-Holstein, on the northeast by Mecklenburg-West Pomerania, on the east by Saxony-Anhalt, on the southeast by Thuringia, on the south by the states of Hesse and North Rhine-Westphalia, and on the west by the Netherlands. Hannover is the capital and largest city (see map below). The northern two-thirds of Lower Saxony is low and flat. In the southeast and east the country is hilly extending into the Harz Mountains.



Germany - 1993

Microsoft (R) Encarta. Copyright (c) 1993 Microsoft Corporation.
Copyright (c) 1993 Funk & Wagnall's Corporation

Lower Saxony is a rich agricultural state. In the north, wheat, rye, oats, and potatoes are the main crops. Cattle are raised for beef and dairy products. In the south, wheat and sugar beets are grown, and

beef and dairy cattle are raised. Iron and lignite are the chief mineral products. Petroleum deposits in the western part of the state make it a major European producer of oil. Manufacturing is an important activity; the main products are iron and steel, vehicles, and rubber goods.

City of Hannover

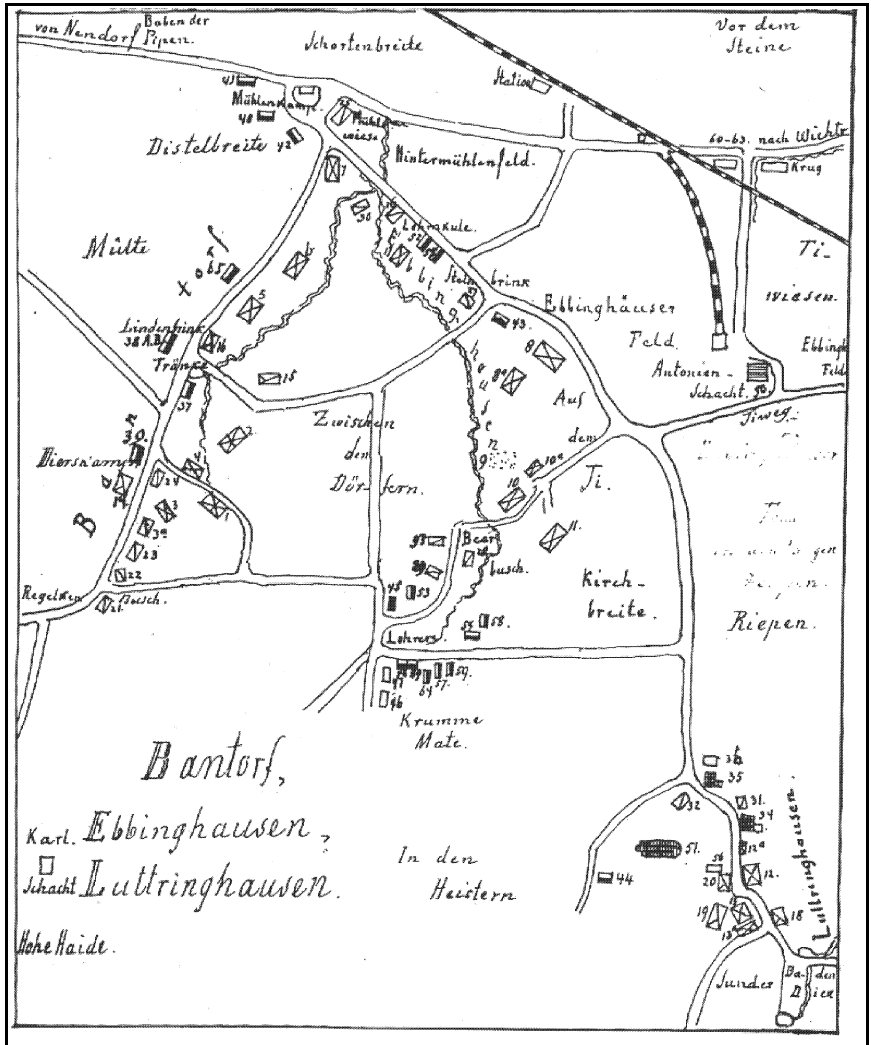
The city of Hannover on the Leine River is the largest city near Bantorf, the village where our Hoppe family originated. It is a manufacturing, commercial, and rail center. Products of the city include motor vehicles, machinery, rubber products, printed materials and processed food.

The Altstadt, or old section of the city, has many medieval features, including narrow streets, gabled houses with overhanging balconies, and the Markt Kirche, a brick structure dating from the 14th century. The oldest church building in Hannover is the Kreuzkirche, constructed about 1300. Among other notable structures is the former royal palace, completed in 1640 and now an art museum.

Hannover received a charter in 1241 and in 1692 the city became the capital of the electorate of Brunswick-Lüneburg. Major commercial and industrial development began after the city passed to Prussia in 1866. It was badly damaged during World War II. The population was estimated to be 505,700 in 1987.²

Village of Bantorf

Bantorf is located about 20 miles west of Hannover and was a village of twenty-five houses at the time H. F. C. Hoppe left there. The Hoppe family is documented as far back as 1638 in Bantorf when Kurt and Margarethe (Steding) Hoppe occupied House #5, shown on the map on the following page. This house remained in the Hoppe family until 1974.



Map of Bantorf, Ebbinghausen and Luttringhausen - 1883
 "Hohenbostel am Deister," Heinrich Welge; Hannover, Germany; 1988.

In 1827, Hermann Heinrich and Engel Marie Dorothee (Stege) Hoppe built House #37 on the map. This house is shown in the two pictures on the following pages. It was originally known as "the house at the drinking trough" and is now known by the address of "Im Dorfe 19."



Original Hoppe Home Bantorf, Germany - 1930

Photo by Henry F. A. Hoppe, Newark, New Jersey

Three sons were born to this family: H. F. C. (1828), Hans Heinrich Friedrich Konrad (1831) and Heinrich Wilhelm August (1838). The house was inherited by H. F. C. upon his marriage to Engel Sophie Eleanora Meier in 1860. Their first three children were born in this house: Friedrich (1860), Louise (1863) and August (1868).

The picture above was taken in 1930 by Henry F. A. Hoppe of Newark, New Jersey. Henry was a son of Hans (above) and moved to America in 1890. The second picture was taken in 1994 by Heinrich Welge of Germany. Mr. Welge published a book in 1988 that details the occupancy of all the houses in Bantorf and four other nearby towns.³

After returning to Germany for a visit in 1930, Henry sent a copy of the above picture to his cousin, Louise (Hoppe) Conerus, along with the following note dated September 15, 1930:

About 3 weeks ago I returned from Germany and took some pictures, which I thought might interest you. The pictures of the house is the one which your father inherited from our grandfather; but when he had it, he sold it pretty soon, took the money and went to America to make his fortune. As is customary the grandfather had reserved 2 rooms for himself and his wife as long as either lived. My parents moved into the rooms after your parents vacated same, as the house was bought by a rich farmer who rented it to tenants ever since. My parents lived in this house for 17 years until they built their own. Both my 2 sisters and myself were born in this house. This is a typical house the way they were built 50 and 100 years ago. This house is about 105 years old, very little has been changed since, except that the hydrant near the front corner was added about 50 years ago and the telegraph pole about 8 years ago.

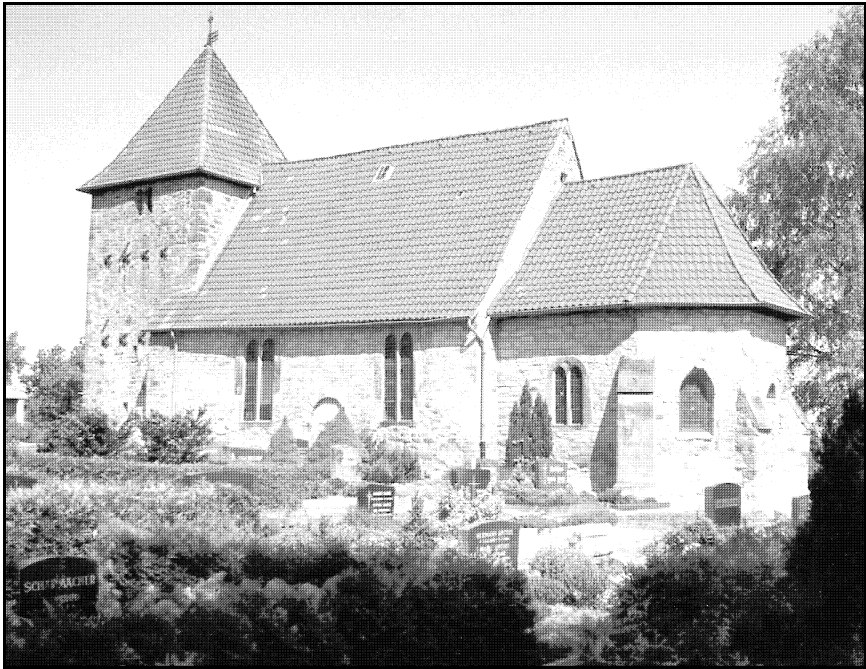


Original Hoppe Home Bantorf, Germany - 1994

Photo courtesy Heinrich Welge

House #37 was sold out of the Hoppe family by H. F. C. in 1867, before he moved to America. The families of his two brothers, Hans H. F. K. and Heinrich W. A., lived in House #65 and #58, respectively. H. F. C. was a carpenter, Hans was a mason and slaughterer and Heinrich was a miner. Their father was a house builder and farmer. The style of House #37, with the stable attached, is typical of the houses from that period. As shown in the recent picture, the stable area has since been converted to living quarters.

The Hoppe family attended the church at Luttringhausen, a small village to the southeast of Bantorf. Luttringhausen is on the map of Bantorf shown previously. The church (Kirche) is depicted as number 51 on the map. A current picture of the church is shown below.



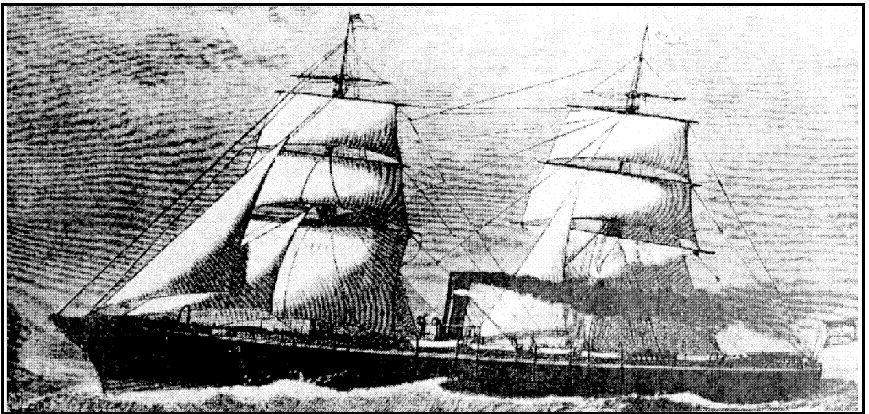
Church at Luttringhausen - 1994

Photo courtesy Heinrich Welge

THE IMMIGRATION TRIP

The father of Heinrich Friedrich Christian Hoppe died in 1868, and his mother died in 1844. In 1867 the house was sold and likely provided money needed for the trip to America. Sophie's brother, August Meier, left Germany for America in 1858.⁴ Her father and mother died in 1839 and 1865, respectively.

The lack of parental ties and a family member already in America likely influenced the decision of the Hoppe family to come to America. On August 7, 1869 Heinrich and Sophie left Bantorf, along with their three children: Friedrich (8), Louise (6) and August (19 mo.). They were processed for departure in Bremen, before sailing for New York City from the seaport of Bremerhaven on the S.S. Deutschland, shown below.



S.S. Deutschland, North German Lloyd Line
The Peabody Museum, Salem

Conditions on the ship were likely similar to those covered by the following rules passed in 1848 that governed immigrant passenger ships:

1. Every passenger to rise at 7 a.m. unless otherwise permitted by the surgeon.
2. Breakfast from 8-9 a.m., dinner at 1 p.m., supper at 6 p.m.
3. Passengers to be in their beds by 10 p.m.
4. Fires to be lighted by passengers' cook at 7 a.m. and kept alight by him till 7 p.m., then to be extinguished.
5. Three safety-lamps to be lit at dusk; one to be kept burning all night in main hatchway; two others may be extinguished at 10 p.m.
6. No naked light to be allowed at any time or on any account.
7. The passengers when dressed, to roll up their beds, to sweep the decks, including the space under the bottom of berths, and to throw the dirt overboard.
8. Breakfast not to commence till this is done.
9. The sweepers for each day to be taken in rotation from the males above 14, in the proportion of 5 for every 100 passengers.
10. Duties of the sweepers to be to clean the ladders, hospitals, and roundhouses, to sweep the decks after every meal and to dry, holystone and scrape them after breakfast.
11. The occupant of every berth to see that his own berth is well brushed out.
12. The beds to be well shaken and aired on the decks, and the bottom boards, if not fixtures, to be removed and dry scrubbed and taken on deck at least twice a week.
13. Two days in the week to be applied by the master as washing days, but no clothes to be washed or dried between the decks.

14. The coppers and cooking vessels to be cleaned every day.
15. The scuttles and sternports, if any, to be kept open from 7 a.m. to 7 p.m., and the hatches at all hours.
16. Hospitals to be established with an area, in ships carrying 100 passengers, of not less than 48 superficial feet with 2 or 4 berths.
17. On Sunday the passengers to be mustered at 10 a.m., when they will be expected to appear in clean and decent apparel. The day to be observed as religiously as circumstances permit.
18. No spirits or gunpowder to be taken on board by any passenger.
19. No smoking allowed between decks.
20. All fighting, gambling, riotous behavior, swearing or violent language to be at once put a stop to. Swords and other offensive weapons, as soon as passengers embark, to be place in the custody of the Master.
21. No sailor to remain on the passenger deck among the passengers except when on duty.
22. No passenger to go to ship's cook-house without special permission of the Master.⁵

The overseas trip took two weeks, with their arrival in New York on August 21. Following are Louise's recollections of their trip from Germany to Nebraska:

About the first of August, at Bremerhaven we left the old country. We were in New York the 21st of August, a long trip to see all that water every day, the weather was nice and I stayed on deck most all day, only went down to eat. Saw lots of whales, they followed the ship to pick up bread or whatever anyone would throw out to them. The ocean was so nice at night, my mother was seasick all the way.

They had music on deck every day and all did enjoy that, but it sure was a happy day when we could see land, such shouting, everybody was on their feet and so happy to see land, about five o'clock in the evening when we landed and when we landed everybody stood in line to land in New York, it seemed to me there were about 25 buses to take people some place to stay all night and the parents had to hold fast to their children as not to lose them. It was a hard time till we got to a room at a hotel, we stayed till the next afternoon. This was my first trip on a train, a little low engine pulled us out of New York, took us to Nebraska City. We stayed at a Mr. Strab Hotel, could not go now by train so Dad got a man to take us in a covered wagon and a pair of mules to take us to Beatrice, this was my one trip in a covered wagon, could not make it in one day so stayed all night. There was lots of timber, we kids had a good time on the woods that evening. Next morning we got to Beatrice at 10 o'clock, here was our friend John Scheve to meet us, took us across the river with a boat. Beatrice had 50 houses. Here mother and us children had to walk three miles to John Scheve home. Dad stayed to come with our luggage that was hauled with a pair of oxen which my Dad bought later to do all of hauling later, so we got to Scheves at noon, it was hard on us to walk so far for the roads were not nice like they are today. This was first of September, this was mother's happy day.⁶

Louise's daughter, Nettie, later told the following account:

On the trip by boat she carried money in big pockets hidden in her full skirt of dress. Grandmother told how her legs were bruised from the heavy coins hitting them. Grandfather was afraid he would be robbed on the boat so Grandmother carried all the money they possessed.⁷

THE NEBRASKA HOMESTEAD

The United States Homestead Act of 1862 opened land in the public domain (land owned by the federal government) to anyone who was either the head of a family, 21 years old, or a veteran of 14 days of active service in the U.S. armed forces, and who was a citizen or had filed a declaration of intent to become a citizen.

Daniel Freeman (1826-1908) and his family of Nebraska, were the first to make a claim under the act on January 1, 1863, when the law went into effect. Homestead National Monument of America, northwest of Beatrice, Nebraska now encompasses the original site on the banks of Cub Creek in Gage County.⁸

Settlement of the newly opened lands in the Nebraska Territory began in the east and spread westward. On March 1, 1867 Nebraska became the thirty-seventh state of the United States.

Nebraska City was a city that developed early and played a major role in the settlement of the territory. It was a jumping off point for overland travelers who came by train from the east or by boat up the Missouri River. It also was a center for shipping military supplies by wagon across the plains to the various forts along the Platte River.

In 1869 the city of Fairbury was founded and in 1871 established as the county seat of Jefferson County along the north bank of the Little Blue River. Northeast of the townsite ran the Oregon Trail, a major overland route of travel from 1843 to the 1870's. Rock Creek Station, a Pony Express, overland stage and emigrant station was located a few miles southeast of Fairbury.

Three days after arriving in Beatrice on September 1, 1869, H. F. C. filed for a homestead located on Cub Creek in Jefferson County, about fifteen miles upstream from the Daniel Freeman homestead.

HOMESTEAD.

APPLICATION, }
 No. 3376 } LAND OFFICE at *Beatrice Nebraska September 4 - 1869.*
 I, *Hendrick Hoppe* of *Jefferson Co. Neb*
 do hereby apply to enter, under the provisions of the act of Congress approved May 20, 1862,
 entitled "An act to secure homesteads to actual settlers on the public domain," the *East 1/2 of NW 1/4 Sec 33*
and NE 1/4 SE 1/4 of Section Four (4) in Township *Three (3)*
North of Range *Three (3)* East containing
160 Acres. *Jansenville Hoppe*

LAND OFFICE at *Beatrice Nebraska*
September 4 - 1869.

I, *Henry W. Atkinson* Register of the Land Office, do hereby certify
 that the above application is for Surveyed Lands of the class which the applicant is legally entitled to enter under the
 Homestead act of May 20, 1862, and that there is no prior, valid, adverse right to the same.
Henry W. Atkinson Register.

Homestead Application of H. F. C. Hoppe
 National Archives

A copy of his application is shown above. Following is an account by his daughter, Louise, of the first few months on the homestead:

We had two friends, boys. They had taken homesteads, they wanted my Dad to be close to them, so Dad went to look at it, so the 4th of September he homesteaded 4 miles north of Jansen and the 12th of October we moved on it. Just the logs were layed, no roof. Dad went to Nebraska City to buy stove, a few chairs and what we had to have to cook with, in the lumber wagon and ox team, took 2 days. A blizzard came, so he had to take 3 days. Here we were in this open log house. We had 2 bachelors near, George Fillmore and Mr. Mitter. The one evening we stayed they came and said there is a prairie fire coming, they came with ox and plowed and plowed around the house and set fire to the out. It was eleven o'clock when they had burned all around our house. So we went to bed on the ground, the next morning we were all covered with snow. At ten o'clock my Dad got home with stove and the other things. So he put up stove, stove pipe went over top of logs, started a fire, was we happy to have a little heat. Our roof was made of sod, laid over sticks of wood and closed the side of the logs with mud. All the rest of our buildings were made with sod. Barns 12' wide and 30' long, 1 chicken coup and hog barn.

We got our flour from old Meridian from Mr. Weisel mill. In April my Dad went to Marysville, Kansas to get shingles, boards to make a floor, so things got a little better every day.⁹

The Final Proof of the homestead was filed by H. F. C. on February 12, 1876, as shown below. Note that in America he used the name Frederick. The legal description of the land was the East 1/2 and NW 1/4 SW 1/4 Section 3 and NE 1/4 SE 1/4 Section 4 in Township 3 North of Range 3 East containing 160 acres.

Final Proof required under Homestead Act May 20, 1862.

WE, M. B. Thornell & Caspar Winderkehr do solemnly swear that we have known Frederick Hoppe for about 7 years last past; that he is the head of a family consisting of a wife and five children; that he is a citizen of the United States; that he is an inhabitant of the E. 1/2 S. W. 1/4 & N. W. 1/4 Sec. 3 & N. E. 1/4 S. E. 1/4 of section No. 4 in Township No. Three North of Range No. 3 East and that no other person resided upon the said land entitled to the right of Homestead or Pre-emption.

That the said Frederick Hoppe entered upon and made settlement on said land on the 4th day of October 1869, and has built a house thereon 14 x 16 feet in size, a good comfortable dwelling house to live in

and has lived in the said house and made it his exclusive home from the 4th day of October 1869 to the present time, and that he has, since said settlement, plowed, fenced, and cultivated about 80 acres of said land, and has made the following improvements thereon, to wit: Dug one well & bored one well, has built a stable and granary, has set out about four acres of forest trees; has hedge rows broke around the tract

I, M. B. Thornell
Caspar Winderkehr,
do hereby certify that the above affidavit was taken and subscribed before me this 12th day of February 1876

H. W. Parker
H. W. Parker
Register

We certify that _____ whose names are subscribed to the foregoing affidavit, are persons of respectability.

_____, Register.

_____, Receiver.

To acquire title to the land, the homesteader was obliged to settle on or cultivate the homestead for five years, after which he had to file an affidavit called "Final Proof." This affidavit described the improvements made to the land.

Improvements described on H. F. C.'s Final Proof included:
"..built a house 14 feet by 16 feet in size, a good comfortable dwelling house to live in, cultivated 80 acres of land, dug one well and bored one well, built a stable and granary, set out about four acres of forest trees and broke hedge rows around the tract."

A second house was built to replace the original log house, probably around 1880. The second house no longer stands and is shown in the picture below.



Sophie Hoppe and grandchildren Alma and Arthur Sellenrick in front of house on Hoppe homestead. 1902

THE PIONEER FAMILY

Heinrich Friedrich Christian (Frederick) Hoppe was born on February 2, 1828 in Bantorf, Germany. He died on January 6, 1888 on the Jefferson County, Nebraska homestead after working it into a profitable living. He took ill in the fall of 1887 while working in the fields and never fully recovered. Before his death he also purchased an additional 160 acres lying in the northwest quarter of Section 3, north of the homestead.

Frederick was well thought of in the community. A local historian, A. V. Pease, wrote the following about him in a look back at some early pioneers: He was "one of the finest old Germans I ever knew . . . I knew him quite well and thot a great deal of him."¹⁰



Friedrich & Sophie Hoppe Tombstone
"Here Rest in Peace Our Parents"
Cub Creek Cemetery, St. Paul's Church

In 1882 several German and West Prussian immigrants held a meeting at the Hoppe home and there decided to organize a church. On September 4, 1882 the St. Paul United Church of Christ was organized with Frederick being one of fifteen founding members.

The church was built across the road from the Hoppe homestead on land donated by George Fillmore. Descendants of Frederick and Sophie held continuous membership in the church for nearly one-hundred years.¹¹ Frederick, his wife, and several descendants are buried in Cub Creek Cemetery located on the church grounds.

Engel Sophie Eleanora Meier was born on September 10, 1834 in Wichtringhausen, where her father was a tavernkeeper. She died on October 1, 1911 while living with the family of her daughter, Louise (Hoppe) Conerus, in Fairbury. She was long remembered for her work as a midwife among the families in the surrounding area. Louise's daughter, Nettie, recalled the following memories of her grandmother:

Grandmother trained as Midwife in Germany, helped out where ever there was sickness, started her birth record 7 years after they came to the Cub Creek area, kept record 34 years, listed 253 births.

Went to many in the Russian settlement - she spoke low German which they understood. Used her spinning wheel, brought with them from Germany, to spin wool yarn for stockings and sox. Used molasses for sweetening, there was no sugar. Grandmother kept a complete record of the weather. She read a great deal, had a very keen mind and managed her own business affairs.

Cub Creek church was across the road from their homestead. She was a faithful member there. Her husband Frederick Hoppe being one of the Charter Members.

She drove to Fairbury often for a few days visit - that was a great joy to the Conerus family. Her buggy always contained fruits and vegetables from her garden and orchard which was her pride and joy.

Grandmother dressed very old-fashioned, always dark dresses with full skirts, a little bonnet and cape for church. Many times her only coat for warmth would be her grey wool shawl. For fancy dress she wore bordered silk aprons over her dress. I have her sunbonnet, little bonnet

and shawl and beautiful black silk apron. I loved my grandmother dearly, she lived her last two years in our home. I have many pictures of Grandmother, none was ever taken of Grandfather Frederick Hoppe according to Mother.¹²



*Engel Sophie Eleanora (Meier) Hoppe
1834-1911*

Heinrich Friedrich August (F. C.) Hoppe

The oldest child, know as "Fred" or "F. C.," was born October 28, 1860 in Bantorf, Germany. He was eight years old when the family moved to America.

At the age of nineteen, according to the 1880 Nebraska Census, Fred was working as a hired hand on the farm of John McTurk Gibson, a Scottish farmer located one mile northeast of the Hoppe farm. On September 14, 1881 he married the farmer's daughter, Agnes, in her home. Agnes was born August 24, 1863 in Marengo, Iowa. Her parents homesteaded in Jefferson County in 1868. It is said that Fred's father did not approve of the marriage since Agnes was not German.

Fred and Agnes lived and farmed in the area until 1892 when they moved to Kansas in Phillips County. In Nebraska, five children were born to them: John Frederick, November 3, 1882; Sophia Leola, November 7, 1884; Charles Henry, September 30, 1886; Agnes Josephine, November 3, 1888; and Francis (Frank) Herman, December 24, 1890.

Fred was a rancher and farmer in the area of Gretna, Kansas. He raised registered Hereford cattle and was a prominent member of the national Hereford breeder's organization, regularly attending meetings in Kansas, Nebraska and other states.

After moving to Kansas, seven more children were born into the family: Mabel Louise, January 24, 1893; Frederick Irving, January 19, 1895; Anna Margaret, March 6, 1897; Arthur William, February 7, 1899; Edwin Herbert, June 17, 1901; Olive Eleanor, October 14, 1903; and Ross Aaron, October 16, 1906.

Agnes died on September 24, 1926 and Fred died on May 8, 1943, both at their home. They are buried in Plum Creek Cemetery located across the road from their farmstead.



*F. C. Hoppe Family
Lt/Rt: Ed Mabel, Agnes, Frank, Ross, F. C., Sophia, Olive, Charles, John, Anna, Art and Fred*

Louise Dorothea Antoinette Hoppe

The second child and oldest daughter, Louise, was born on June 1, 1863 in Bantorf, Germany. She was six years old at the time the family came to Nebraska. On March 16, 1886 she was married to Herman Henry Conerus in the Hoppe home. Herman was born April 28, 1856 in Cleverns, Germany.

The Conerus family lived in Fairbury where Herman owned a shoe shop on the west side of the Courthouse Square. He died April 19, 1919 in Fairbury and is buried in the Fairbury Cemetery.



Herman Conerus Shoe Shop, Fairbury

To this family were born five children, all girls: Sophie Margaretha, January 18, 1887; Anna Hermiene, December 7, 1888; Emma Sophie Caroline, March 18, 1892; Antoinette Anna Wilhelmine (Nettie), May 12, 1894; and May, May 5, 1896, who died at the age of 11 months.

Grandmother Sophie Hoppe lived with the Conerus family for about two years before her death in 1911. Louise died April 3, 1944 in Fairbury and is buried in the Fairbury Cemetery.



*Louise (Hoppe) Conerus Family
Left to Right: Emma, Louise, Anna, Sophie, and Nettie*

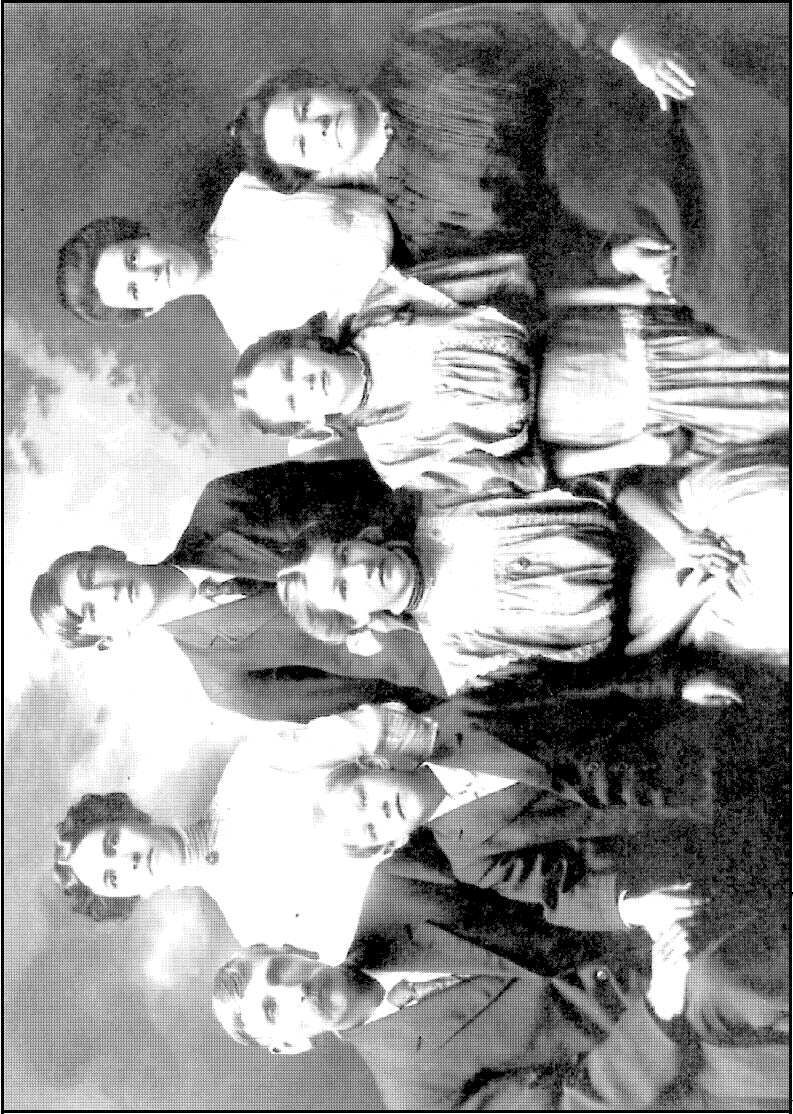
August Carl Friedrich Hoppe

August Hoppe was born January 7, 1868 in Bantorf, Germany and was nineteen months old when his parents left Germany for America. On January 10, 1890 he married Henrietta (Braase) Heidelk. Henrietta was born November 5, 1863 in Red Budd, Illinois. Her first husband had died, leaving two daughters in her care: Sophie Dorothea Louise, February 3, 1885 and Mathilda (Tillie), September 23, 1887.

After their marriage, they lived on Henrietta's farm for about three years. They then moved onto the north quarter of the Hoppe farm where they remained until 1927. They were unable to overcome the hard financial troubles of that period and had to relinquish the farm. They moved to a nearby farm where they lived until Henrietta's death on March 2, 1936 and August's death on July 17, 1942. They are buried in Cub Creek Cemetery of St. Paul's Church.

Six children were born to this marriage: Anna Sophie Marie, October 8, 1890; Conrad August Henry, May 28, 1893; Henry Herman Christian, June 5, 1894; Eleanora Sophie Charlotte (Nora), April 27, 1897; Emilie (Millie), April 20, 1900; Ludwig Christoph George (Louis), November 6, 1903.

August, Jr. lived on the Hoppe homestead after his marriage in 1920 until 1927. He then moved his family onto his parent's place and, while he was never able to purchase it back, he remained on the place until his death in 1979.



August Hoppe Family

Lt to Rt: August, Sophie, Louie, August, Nora, Millie, Tillie, and Henrietta

Heinrich Albert Hoppe

The youngest son and fourth child, Henry, was born April 19, 1871 on the homestead in Jefferson County, Nebraska. He was married on September 30, 1897 at Deshler, Nebraska to Marie Fangemeier. Marie was born May 18, 1876 in Germany.

Henry and Marie lived near Deshler, Gilead and Nelson, Nebraska until about 1911 when they moved onto the Hoppe homestead. In 1920 they sold the farm and moved to California, living in Pomona and Glendale. Henry was a shoe shop proprietor at the time of his death on September 13, 1935 in Glendale. He is buried in Forest Lawn Cemetery.

Two children were born to them: Alvin, April 17, 1899 and Henri Edwin, June 27, 1903. A daughter, Marie Catharine, born August 9, 1903 was adopted by Henry and Marie. Alvin died at the age of three while the family lived at Nelson, Nebraska.

Marie moved back to Nebraska sometime after Henry's death and she died on March 15, 1959 at Gilead, Nebraska. She is buried near there.



Henry, Edwin and Marie Hoppe

Sabrea Sophie Hoppe

The youngest child, Sophie, was born at the family home in Jefferson County on February 7, 1875. She was married to George Sellenrick on February 7, 1899 at St. Paul's Church. George was born October 29, 1873 at Holzhausen, Germany. His parents were farmers in the Cub Creek vicinity.

After their marriage, Sophie and George lived with Grandmother Hoppe on the homestead for a few years before building their own place. Grandmother lived with them for a time before moving to the Conerus home. The Sellenrick's lived and worked on their farm most of their lives. Sophie died on January 9, 1946 in Fairbury and George died on October 4, 1955 in Lenexa, Kansas. They are buried in Cub Creek Cemetery of St. Paul's Church.

To this marriage seven children were born: Arthur August Gottlieb, November 5, 1899; Alma Louise Ida, September 25, 1901; Herbert Henry Herman, March 25, 1904; Clarence Louie Frederick, September 4, 1906; Raymond Gerald Leslie, April 27, 1909; Sophie Evelyn Henrietta, August 4, 1910; and Wilmer Leo Emil, February 15, 1912.



*Sophie (Hoppe) Sellick Family
Lt to Rt: George, Sophie, Arthur, Alma, Herbert, Clarence, Raymond, Evelyn, and Wilmer*

FAMILY BIBLE RECORDS

The following records were taken from a Bible that belonged to Sophie (Meier) Hoppe and passed down through the Sophie (Hoppe) Sellenrick family. This Bible, along with numerous other family possessions, was saved from a fire that destroyed the Sellenrick family home. Opposite each original record is shown the English translation.

Familien-Register.	
Geburten.	
Friedrich Hoppe geboren	am 28 October 1860
Louisa Hoppe geboren	am 1 Juni 1863
August Hoppe geboren	am 4 November 1868
Guiseif Hoppe geboren	am 19 April 1871
Dogfin Hoppe geboren	am 7 Februar 1875

Family-Register

Births

Friedrich Hoppe born
on 28 October 1860

Louise Hoppe born
on 1 June 1863

August Hoppe born
on 7 January 1868

Heinrich Hoppe born
on 19 April 1871

Sophie Hoppe born
on 7 February 1875

Familien-Register.

Sterbefälle.

Father

Erindriif Gogge *gn* / 16 Juni 1888

10,33 Morg

Mutter

Sophie Gogge *gn* / 14m Oct 1901.

Kerfsmiddag 4,30. *gn*

Trauungen.

Erindriif *gn* *gn* 14 Sept

1881

Louise *gn* *gn* 06 Mars

1886

Family-Register

Deaths

Father

Friedrich Hoppe died 6 January 1888
10:35 a.m.

Mother

Sophie Hoppe died on 1 October 1911
4:30 a.m.

Marriages

Friedrich and Agnes

14 September 1881

Louise and Hermann

16 March 1886

Mein Vater gest am 22 Nov 1839

Mein Bruder Friedrich gest am 4 Nov 1857

Mein Bruder Friedrich gest am 24 Aug 1858

Mein Mutter gest am 1865

Mein Schwester Lohse gest März 1863

Mein Bruder August nach Amerika
am 1 Feb 1858

Mein Bruder August nach Amerika
am 1 Feb 1858

Die Reise von Deutschland nach
Amerika am 4 März 1869 auf dem
Schiff am 21. Landeten in New York
am am 1 Feb nach New York in New York
am 4 Feb kamen wir in New York
genau am 11. Okt. sind wir
dann gegangen 1869

My father died on 22 November 1839

My brother Heinrich died on 4 November 1857

My brother Friedrich died on 24 April 1858

My mother died December 1865

My sister Lola died March 1863

My brother August to America
on 1 September 1858

My sister Louise died 15 May 1883

The trip from Germany to

America on 1 August 1869 from Bremer-

haven on 21 arrived in New York

on 1 September we came to Beatrice

on 7 September we have the homestead

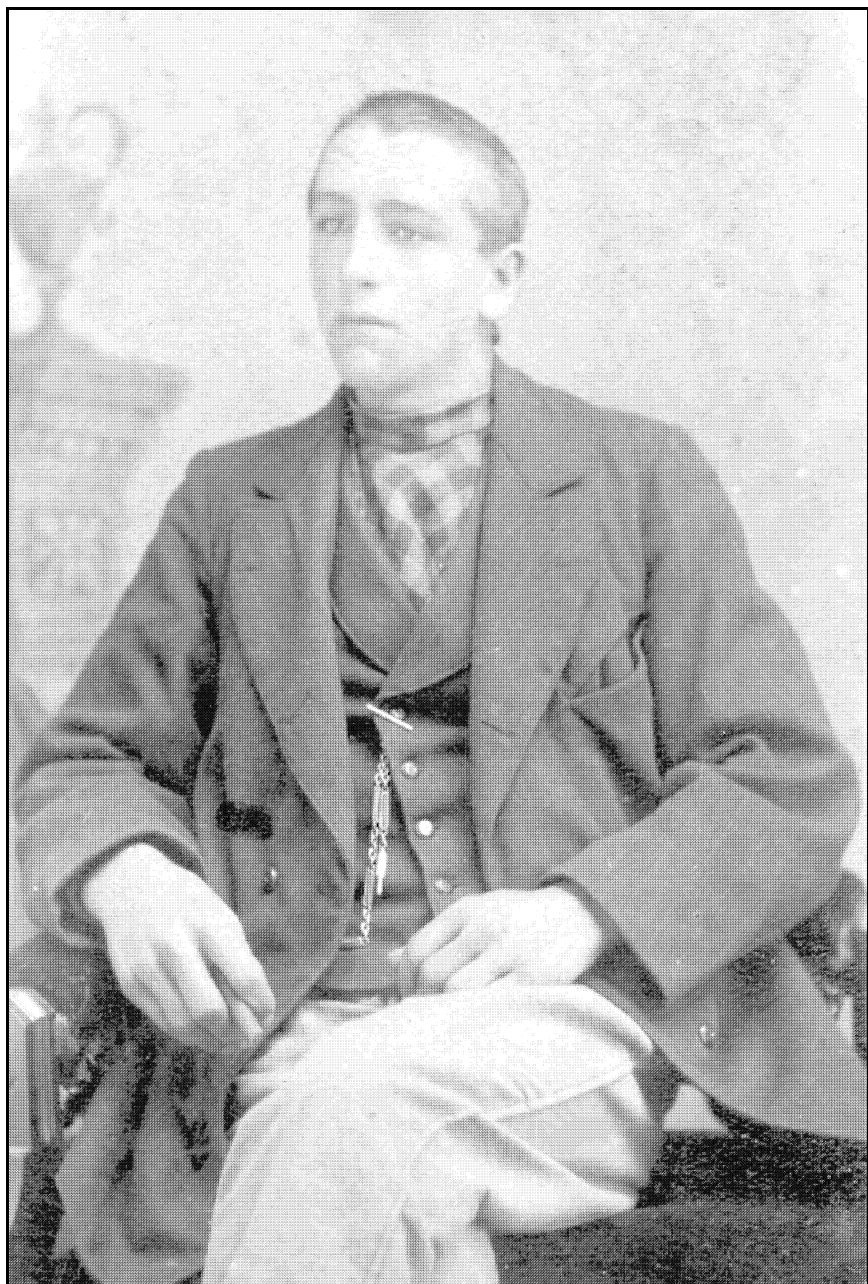
on 12 October we are

there 1869

MISCELLANEOUS PICTURES



F.C., Sophie, Louise, and Mother Sophie Hoppe



August Carl Frederick Hoppe



Sabrea Sophie Hoppe



Sabrea Sophie Hoppe



Heinrich Friedrich August (F. C.) Hoppe



F. C. Hoppe



Louise and Sophie Hoppe



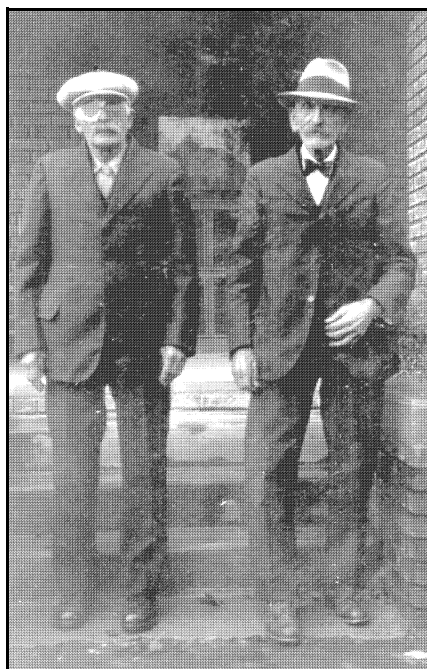
Lt to Rt: Henrietta and August Hoppe, Agnes and F. C. Hoppe, Sophie and George Sellenrick, Louise and Herman Conerus



Lt to Rt: F. C., Violet, John and Sophie Hoppe



Sophie (Hoppe) Sellenrick, F. C. Hoppe, Louise (Hoppe) Conerus



F. C. and August Hoppe



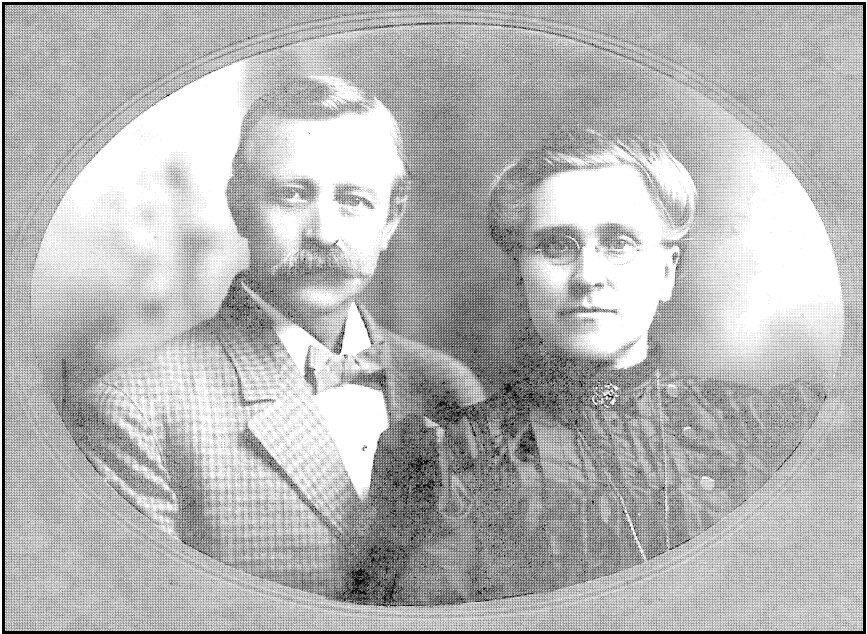
Agnes and F. C. Hoppe



Henry and Marie Hoppe



Sophie and George Sellenrick



Herman and Louise Conerus



Marie and Henry Hoppe



Henry Hoppe

THE REUNIONS

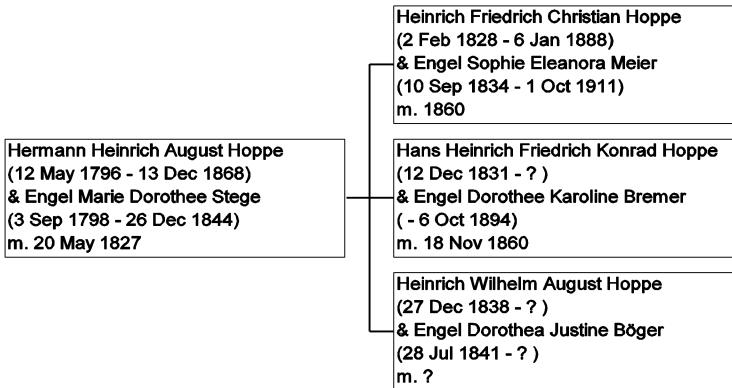
Sunday, July 25, 1954 cousins from the F.C. Hoppe, Louise (Hoppe) Conerus and August Hoppe families met in the City Park in Hastings, Nebraska for the first Hoppe Family Reunion. This began a tradition of meeting on the last Sunday of July in Hastings, a city that was about equally distant from most of the cousins who attended. There were fifty-two people present on that day:

Fred, Emma and Marie Hoppe	Phillipsburg, KS
Olive Hoppe	Phillipsburg, KS
Sophia and John D. Otis	Phillipsburg, KS
Fred, Muriel, James and Janet Otis	Phillipsburg, KS
John Henry, Gretchelle, John James, David, Lynn and Dara Otis	Agra, KS
Mildred Otis	Agra, KS
Frank Hoppe	Julesburg, CO
Edwin, Lois and Glen Hoppe	Farnam, NE
Mary Ellen, Rex and Bradley Stewart	Farnam, NE
Gene and Betty Hoppe	Farnam, NE
Carol Hoppe	Hastings, NE
Louie, Faith, Gretchen, Billy, Orrin, Lyle and Mary Ellen Hoppe	Albion, NE
August and Ida Hoppe	Plymouth, NE
Nora and Otto Grummert	Plymouth, NE
Orland, Doris, David and Donald Grummert	Plymouth, NE
Marvin, Maxine, Randy, Nancy and Richard Hoppe	Fairbury, NE
Sophie Conerus	Fairbury, NE
Margie, Roger Leon, Steven and Kerry Merritt	Omaha, NE

Forty years later, in commemoration of the 125th anniversary of the immigration of Friedrich and Sophie Hoppe to America, the Hoppe cousins met in Fairbury, Nebraska on Saturday, July 30, 1994. Over 100 people attended the pot-luck dinner and afternoon program. After the program, many of those present met near the Hoppe homestead at Cub Creek Cemetery where the Hoppe ancestors are buried. Sunday morning more than sixty people attended an informal family church service in the St. Paul Church, located next to the cemetery.

GENEALOGY

Outlined on the following pages are the descendants of Hermann Heinrich August and Engel Marie Dorothee (Stege) Hoppe of Bantorf, Germany, through their three sons shown below.



The oldest son, Heinrich Friedrich Christian Hoppe, moved to America in 1869 and is the subject of this history.

Hans Heinrich Friedrich Konrad Hoppe had a son, Heinrich Friedrich August (Henry F. A.) Hoppe, who moved to America in 1890 and settled in New Jersey. Henry's son, Fred W. Hoppe from Chatham, New Jersey, has sent information concerning this branch of the Hoppe family.

Two descendants of Heinrich Wilhelm August Hoppe have been in contact and provided information for their branch of the family. They are Burkhard Hoppe of Smiechen, Germany and Alfred Hoppe of East Islip, New York.

It should be noted that some people contacted did not respond and send updated information, therefore, some errors may exist in the following list and some additional descendants likely exist who are not reported here. A genealogical summary that includes marriage dates and event places is available upon request.

1. **Hermann Heinrich August Hoppe** (12 May 1796 - 13 Dec 1868)
 - & Engel Marie Dorothee Stege (3 Sep 1798 - 26 Dec 1844)
 - 1.1 **Heinrich Friedrich Christian Hoppe** (2 Feb 1828 - 6 Jan 1888)
 - & Engel Sophie Eleanora Meier (10 Sep 1834 - 1 Oct 1911)
 - 1.1.1 **Heinrich Friedrich August (F.C.) Hoppe** (28 Oct 1860 - 8 May 1943)
 - & Agnes Gibson (24 Aug 1863 - 24 Sep 1926)
 - 1.1.1.1a John Frederick Hoppe* (3 Nov 1882 - 6 May 1939)
 - & Maggie Myrtle French (17 Apr 1887 - 4 Oct 1913)
 - 1.1.1.1a.1 Violet Ruby Hoppe (22 Feb 1910 - 24 Mar 1978)
 - 1.1.1.1b John Frederick Hoppe* (3 Nov 1882 - 6 May 1939)
 - & Flossie May Snow (7 Sep 1890 - 27 Aug 1977)
 - 1.1.1.1b.1 Maxine Hoppe (21 Oct 1920 - 2 Oct 1924)
 - 1.1.1.1.2 Sophia Leola Hoppe (7 Nov 1884 - 15 Feb 1980)
 - & John Davies Otis (24 Oct 1882 - 24 Aug 1967)
 - 1.1.1.1.2.1 Mildred Elizabeth Otis (9 Oct 1914 -)
 - 1.1.1.1.2.2 Frederick Charles Otis (7 Mar 1917 -)
 - & Muriel Joy Koontz (12 Dec 1918 -)
 - 1.1.1.1.2.2.1 James Frederick Otis (8 Dec 1943 -)
 - & Darlene Marie Shields (14 Aug 1950 -)
 - 1.1.1.1.2.2.2 Kenneth Davies Otis (23 Dec 1947 - 28 Dec 1950)
 - 1.1.1.1.2.2.3 Janet Sue Otis (28 May 1950 -)
 - & John David Nease (29 Nov 1951 -)
 - 1.1.1.1.2.2.3.1 Ryan Bradley Nease (6 Jun 1980 -)
 - 1.1.1.1.2.2.3.2 Derek Alan Nease (27 Jun 1983 -)
 - 1.1.1.1.2.2.4 Joy Leslie Otis (7 Sep 1955 -)
 - & Joseph Robert Caples (24 Sep 1948 -)
 - 1.1.1.1.2.2.4.1 Deanna Caples (8 Oct 1977 -)
 - 1.1.1.1.2.2.4.2 Christina Ann Caples (30 Nov 1979 -)
 - 1.1.1.1.2.2.4.3 Anna Denise Caples (12 Dec 1980 -)
 - 1.1.1.1.2.2.4.4 Donna Susanne Caples (24 Jan 1982 -)
 - 1.1.1.1.2.3 John Henry Otis (15 Mar 1924 -)
 - & Gretchelle Eloise Schropshier (28 Jul 1927 -)
 - 1.1.1.1.2.3.1 John James (Jay) Otis (27 Apr 1947 -) & Wanda Sue Bailey (-)
 - 1.1.1.1.2.3.1.1 John Brandon Otis (31 Jan 1977 -)
 - 1.1.1.1.2.3.1.2 Jaime Leah Allyn Otis (1978 -)
 - 1.1.1.1.2.3.2 David Lee Otis (26 Jul 1948 -) & Jolene Kay Sammons (-)
 - 1.1.1.1.2.3.2.1 Debbie Kay Otis (24 May 1971 -)
 - 1.1.1.1.2.3.2.2 Jennifer Lynn Otis (14 Jul 1973 -)
 - 1.1.1.1.2.3.3 Lynn April Otis (8 May 1951 -) & Vance Mitchell Rowe (-)
 - 1.1.1.1.2.3.4 Dara Kay Otis (3 Aug 1953 -) & Roger L. Leaming (-)
 - 1.1.1.1.2.3.4.1 Megan Kay Leaming (18 Jun 1976 -)
 - 1.1.1.1.2.3.4.2 Ryan Lynn Leaming (27 May 1982 -)
 - 1.1.1.1.2.3.5 Paul Allyn Otis (30 May 1956 -) & Victoria Ann Navarro (-)
 - 1.1.1.1.3 Charles Henry Hoppe (30 Sep 1886 - 7 Sep 1955)
 - & Leora G. Jacobs (4 May 1894 - 29 Jun 1955)
 - 1.1.1.1.4 Agnes Josephine Hoppe (3 Nov 1888 - 7 Apr 1890)
 - 1.1.1.1.5 Francis Herman (Frank) Hoppe (24 Dec 1890 - 20 Nov 1963)
 - 1.1.1.1.6 Mabel Louise Hoppe (24 Jan 1893 - 24 Aug 1969)
 - 1.1.1.1.7 Frederick Irving Hoppe (19 Jan 1895 - 9 Sep 1973)
 - & Emma Viola Outhet (3 Nov 1899 - Jan 1986)
 - 1.1.1.1.7.1a Margie Louise Hoppe* (2 Apr 1929 -) & George Merritt (Jul 1924 -)
 - 1.1.1.1.7.1a.1 Roger Leon Merritt (21 Sep 1950 -)
 - 1.1.1.1.7.1a.2 Steven LaVerne Merritt (5 Nov 1951 -)
 - & Carol Raye Bradley (5 Nov 1950 -)
 - 1.1.1.1.7.1a.2.1 Bradley Merritt (6 Apr 1978 -)

- 1.1.1.7.1a.2.2 Scott Michael Merritt (10 Jun 1980 -)
- 1.1.1.7.1a.2.3 Michael Scott Merritt (14 Nov 1981 -)
- 1.1.1.7.1a.2.4 Aaron Matthew Merritt (4 Jan 1988 -)
- 1.1.1.7.1a.3 Kerry Alan Merritt (21 Jan 1953 -)
& Yolanda Alarcon-Ortega (4 Feb 1943 -)
- 1.1.1.7.1a.4 Vona Marie Merritt (6 Feb 1956 -)
& Robert William Parker (5 Nov 1946 -)
 - 1.1.1.7.1a.4.1 Andrew Robert Parker (8 May 1978 -)
 - 1.1.1.7.1a.4.2 Matthew Robert Parker (13 Nov 1984 -)
 - 1.1.1.7.1a.4.3 Kimberly Marie Parker (22 Jan 1987 -)
- 1.1.1.7.1a.5a Robert Lee (Bob) Merritt* (25 Mar 1959 -)
& Joni Marie Desmond (6 Aug 1960 -)
 - 1.1.1.7.1a.5a.1 Christopher Lee Merritt (9 Aug 1978 -)
- 1.1.1.7.1a.5b Robert Lee (Bob) Merritt* (25 Mar 1959 -)
& Linda Lee Goeden (14 May 1960 -)
 - 1.1.1.7.1a.5b.1 Chelsea Leeann Merritt (24 May 1985 -)
 - 1.1.1.7.1a.5b.2 Cody Lee Merritt (20 Jul 1987 -)
- 1.1.1.7.1b Margie Louise Hoppe* (2 Apr 1929 -)
& Harold Robert Dahlgren (20 Sep 1920 -)
- 1.1.1.7.2 Edwin Irving Hoppe (15 Oct 1932 -) & Vona Stone (31 Jul 1932 -)
 - 1.1.1.7.2.1 Colean Medeba Hoppe (21 Feb 1956 - 18 May 1972)
 - 1.1.1.7.2.2 Karen Jo Hoppe (22 Jul 1957 -) & Floy Bruning (-)
 - 1.1.1.7.2.2.1 Benjamin Franklin Bruning (9 Apr 1980 -)
 - 1.1.1.7.2.2.2 Shannon Leigh Bruning (15 Feb 1982 -)
- 1.1.1.7.3 Marie Viola Hoppe (2 Oct 1939 -)
& Virgil Lowell Powell (5 Mar 1938 -)
 - 1.1.1.7.3.1 Meshelle Anne Powell (30 May 1961 -)
 - 1.1.1.7.3.2 Pamela Rae Powell (28 Jan 1963 -)
& Gary Brunke (20 Dec 1935 -)
 - 1.1.1.7.3.2.1 Megan Marie Brunke (3 Nov 1989 -)
 - 1.1.1.7.3.2.2 Dustin Joel Brunke (14 Dec 1992 -)
- 1.1.1.7.4a Fred Wesley Hoppe* (28 Apr 1934 -)
& Twila May Bradley (16 May 1934 -)
 - 1.1.1.7.4a.1a Lisa Elaine Hoppe* (4 Jul 1962 -)
& Kenneth Earl Post (22 May 1962 -)
 - 1.1.1.7.4a.1b Lisa Elaine Hoppe* (4 Jul 1962 -)
& Mitch Potts (18 Sep 1962 -)
 - 1.1.1.7.4a.1b.1 Melissa Ann Potts (26 May 1988 -)
 - 1.1.1.7.4a.1b.2 Amanda Lynn Potts (22 Dec 1990 -)
 - 1.1.1.7.4a.2 Richard Wayne Hoppe (15 Jun 1964 -)
& Eva Grace Ayres (7 Jul 1968 -)
- 1.1.1.7.4b Fred Wesley Hoppe* (28 Apr 1934 -) & Alice Foster (22 Apr 1936 -)
- 1.1.1.8 Anna Margaret Hoppe (6 Mar 1897 - 8 Jul 1973)
& Walter Robert Addie (9 Mar 1894 - 5 Oct 1970)
- 1.1.1.8.1 Viola Evelyn Addie (26 Sep 1917 -)
& William Edward Kirby (21 Mar 1910 -)
 - 1.1.1.8.1.1 Wayne Edward Kirby (26 Sep 1938 -)
& Phyllis Irene Russell (-)
 - 1.1.1.8.1.2 Bonnie Jo Kirby (7 Jan 1941 - 22 Feb 1941)
 - 1.1.1.8.1.3 Connie Ann Kirby (18 May 1942 -)
& George William Lewis Jr. (-)
 - 1.1.1.8.1.3.1 George William Lewis III (27 Mar 1963 -)
 - 1.1.1.8.1.3.2 Suzanne Elizabeth Lewis (24 Jan 1965 -)
 - 1.1.1.8.1.4 Marlin Roy Kirby (13 May 1942 -) & Myumi Tokeko (-)
 - 1.1.1.8.1.5 William Lloyd Kirby (2 Jan 1947 -) & (-)

- 1.1.1.8.1.6 James Von Kirby (8 Sep 1950 -) & Janice (24 Nov 1952 -)
- 1.1.1.8.1.7 Debra Catherine (Hope) Kirby (1 Oct 1951 -)
& James Summers (-)
- 1.1.1.8.1.8 Dawn Ellen Kirby (22 Sep 1952 -)
& Phillip Ross Wright (11 Jul 1951 -)
 - 1.1.1.8.1.8.1 Christopher Ross Wright (7 Jul 1981 -)
 - 1.1.1.8.1.8.2 Cory Phillip Wright (11 Jun 1984 -)
- 1.1.1.8.1.9 Lynn Rose Kirby (13 Oct 1953 -) & Donald Veasey (-)
- 1.1.1.8.1.10 Jack Boyd Kirby (21 Jan 1958 -) & Sandra (-)
- 1.1.1.8.2a L. Dee Addie* (3 May 1920 - 14 Mar 1984)
& Evelyn Neely (11 Dec 1922 - 30 Jun 1973)
 - 1.1.1.8.2a.1 Shelia Elaine Addie (9 Mar 1949 -)
& Robert Atherton (5 Jan 1948 -)
 - 1.1.1.8.2a.1.1 Trevor Lee Atherton (9 Feb 1979 -)
 - 1.1.1.8.2a.1.2 Brice Nolan Atherton (6 May 1983 -)
 - 1.1.1.8.2a.2 Ronald Dee Addie (1 Jun 1952 -) & Ann Marie Toman (-)
- 1.1.1.8.2b L. Dee Addie* (3 May 1920 - 14 Mar 1984)
& Esther J. (23 Jan 1924 -)
- 1.1.1.8.3 E. Lee Addie (15 Sep 1924 -) & Kathleen Clara Bales (20 Jun 1929 -)
 - 1.1.1.8.3.1 Linda Lee Addie (11 Jan 1948 -) & Philip Hash (-)
 - 1.1.1.8.3.1.1 Jonathan David Hash (1967 -)
 - 1.1.1.8.3.1.2 Ian Bradley Hash (1968 -)
 - 1.1.1.8.3.1.3 Jennifer Kathleen Hash (1970 -)
 - 1.1.1.8.3.2 David Michael Addie (13 Jan 1950 -) & Nancy Lewis (-)
 - 1.1.1.8.3.2.1 Kathleen Addie (-)
- 1.1.1.8.4 Andrew Walter Addie (10 Nov 1940 -)
& Barbara Kay Renard (13 Jan 1944 -)
 - 1.1.1.8.4.1 Lea Kay Addie (20 Nov 1963 -)
& Timothy Dean Sherfield (8 Sep 1960 -)
 - 1.1.1.8.4.1.1 Shelby Kay Sherfield (28 Nov 1992 -)
 - 1.1.1.8.4.2 Mechelle Denise Addie (31 Jul 1966 -)
& Joseph Bland Phillips (29 Nov -)
 - 1.1.1.8.4.2.1 Casey Jo Phillips (12 Sep 1992 -)
 - 1.1.1.8.4.3 Scott Andrew Addie (19 Oct 1970 -)
& Susan Annette Bowman (23 Dec 1968 -)
 - 1.1.1.8.4.3.1 Anthony Scott Addie (8 Feb 1991 -)
 - 1.1.1.8.4.3.2 Whitney Makay Addie (15 Sep 1993 -)
- 1.1.1.9 Arthur William Hoppe (7 Feb 1899 - 16 Sep 1977)
& Verlyn Leith Van Meter (6 Feb 1912 - 28 Nov 1989)
 - 1.1.1.9.1 Herbert William Hoppe (29 Aug 1929 -)
& Jessie Marie Keller (26 May 1932 -)
 - 1.1.1.9.1.1 Donald William Hoppe (22 May 1951 -)
 - 1.1.1.9.1.2 Eric Lauren Hoppe (30 Jun 1952 -)
 - 1.1.1.9.1.2.1 Jayme Katharine Hoppe (12 Oct 1981 -)
 - 1.1.1.9.1.3 Allena Charmaine Hoppe (5 Nov 1953 -)
 - 1.1.1.9.1.3.1 Jenni Rebecca Hoppe (21 May 1971 -)
 - 1.1.1.9.1.3.2 Melanie Jayne Hoppe (14 Mar 1974 -)
 - 1.1.1.9.1.3.3 Daniel Wayne Hoppe (18 Aug 1975 -)
 - 1.1.1.9.1.4 Lorri Marie Hoppe (19 Aug 1961 -)
 - 1.1.1.9.2a Judith Colleen Hoppe* (29 Jun 1933 -)
& Jesse Marion Kilgore (7 Nov 1926 -)
 - 1.1.1.9.2a.1 Artis Marlene Brown (3 Jan 1956 -)
& Dennis Robert Rice (20 Jun 1956 -)**
 - 1.1.1.9.2a.1.1 Tiffany Nicole Rice (10 Mar 1982 -)
 - 1.1.1.9.2a.1.2 Andrew Robert Rice (11 Jun 1985 -)

- 1.1.1.9.2a.2 James Arthur Brown (12 Aug 1958 -)
& Melanie Andrea Williams (29 Jun 1962 -)**
 - 1.1.1.9.2a.2.1 Heather Ann Brown (18 Sep 1980 -)
 - 1.1.1.9.2a.2.2 Dain Patrick Brown (4 Mar 1985 -)
 - 1.1.1.9.2a.2.3 Tia Kylee Brown (6 Jul 1988 -)
- 1.1.1.9.2a.3a Tyra Marianne Brown* (19 Sep 1960 -)
& Lorry James Gustafson (20 Jun 1952 -)**
 - 1.1.1.9.2a.3a.1 Holly Anne Gustafson (3 Jul 1981 -)
 - 1.1.1.9.2a.3a.2 Derek James Gustafson (23 Sep 1982 -)
- 1.1.1.9.2a.3b Tyra Marianne Brown* (19 Sep 1960 -)
& David Frank Kling (11 Dec 1961 -)**
 - 1.1.1.9.2a.3b.1 Kelsey Lynn Kling (7 Aug 1987 -)
- 1.1.1.9.2b Judith Colleen Hoppe* (29 Jun 1933 -)
& Robert Miles Brown (21 Sep 1929 -)
- 1.1.1.9.3 Jerry Quentin Hoppe Dr. (12 May 1935 -)
& Mary Virginia Alexandria Sever (9 Jun 1942 -)
 - 1.1.1.9.3.1 Michael Alexander Hoppe (3 Nov 1965 -)
& Deanne Simone Oldfield (21 Jun 1970 -)
 - 1.1.1.9.3.2 Matthew Brian Hoppe (3 Sep 1969 -)
& Kathy Marie Meza (20 Jul 1969 -)
 - 1.1.1.9.3.2.1 Ashley Denese Hoppe (3 Jan 1989 -)
 - 1.1.1.9.3.2.2 Steven Michael Hoppe (21 Jul 1991 -)
 - 1.1.1.9.3.3 Jennifer Leith Hoppe (10 Oct 1970 -)
& Darryn Russel Athis (3 Oct 1966 -)
 - 1.1.1.9.3.3.1 Timothy Forrest Athis (22 Feb 1994 -)
- 1.1.1.9.4a Larry Van Hoppe* (25 Jun 1937 -)
& Kathleen Evelyn (Kathy) O'Connor (Dec 1939 -)
 - 1.1.1.9.4a.1 Barbara Elaine Hoppe (30 Oct 1957 -)
& Chet S. Conrad (-)
 - 1.1.1.9.4a.1.1 Amy Conrad (-)
 - 1.1.1.9.4a.1.2 Steven Conrad (-)
 - 1.1.1.9.4a.2 David Wayne Hoppe (4 Mar 1958 -) & Becki (-)
 - 1.1.1.9.4a.2.1 Ryan Hoppe (-)
 - 1.1.1.9.4a.3a Tomi Gail Hoppe* (8 Nov 1960 -)
& Kenneth Eugene Crow (16 Feb 1949 - 26 Sep 1987)
 - 1.1.1.9.4a.3a.1 Colleen Elizabeth Crow (12 Sep 1978 -)
 - 1.1.1.9.4a.3a.2 Kimberly Sarah Crow (28 Oct 1979 -)
 - 1.1.1.9.4a.3b Tomi Gail Hoppe* (8 Nov 1960 -)
& Dante R. Labadie (21 Jul 1956 -)
 - 1.1.1.9.4a.4 Larry Van Hoppe II (25 Dec 1964 -)
 - 1.1.1.9.4a.4.1 Larry Van Hoppe III (-)
 - 1.1.1.9.4a.4.2 Travis Hoppe (-)
 - 1.1.1.9.4a.4.3 Cameron Hoppe (-)
- 1.1.1.9.4b Larry Van Hoppe* (25 Jun 1937 -)
& Anna Marie Kolenovsky (8 Mar 1947 -)
- 1.1.1.9.5 Sandra JoAnn Hoppe* (19 Mar 1939 -)
& Charles Clifford Hays (31 Dec 1937 -)
 - 1.1.1.9.5.1 Robin Lee Hays (10 Dec 1960 -)
 - 1.1.1.9.5.2a Shawn Leith Hays* (16 Aug 1966 -)
& Ashwan Kumar (20 Feb 1957 -)
 - 1.1.1.9.5.2b Shawn Leith Hays* (16 Aug 1966 -)
& Charles Marsden Cartright (30 Mar 1965 -)
- 1.1.1.9.6 Sharon Maudine Hoppe (25 Mar 1941 -) & Jerry Lee Wertz (-)
 - 1.1.1.9.6.1a Terry Lee Wertz* (1 Oct 1957 -) & John D'Amico (-)

- 1.1.1.9.6.1b Terry Lee Wertz* (1 Oct 1957 -) & Larry Gandy (-)
 - 1.1.1.9.6.1b.1 Tiffany Lee Gandy (23 Feb 1980 -)
- 1.1.1.9.6.2a Tony J. Wertz* (24 Aug 1959 -) & Kathleen Elaine Bradley (-)
 - 1.1.1.9.6.2a.1 Wesley Adam Wertz (12 Aug 1981 -)
 - 1.1.1.9.6.2a.2 Anthony Patrick Wertz (21 Dec 1983 -)
 - 1.1.1.9.6.2a.3 William Wertz (9 Sep 1985 -)
 - 1.1.1.9.6.2a.4 Kathy Ann Wertz (17 Aug 1987 -)
- 1.1.1.9.6.2b Tony J. Wertz* (24 Aug 1959 -) & Tamra Joy Wicker (-)
 - 1.1.1.9.6.3 Tracy Denise Wertz (1 Oct 1961 -)
- 1.1.1.9.7 Sheila Maralene Hoppe (25 Mar 1941 - Jan 1949)
- 1.1.1.10 Edwin Herbert Hoppe (17 Jun 1901 -)
 - & Lois Leon McLaughlin (29 Jul 1907 -)
 - 1.1.1.10.1 Edwin Gene Hoppe (20 Aug 1928 - 31 Aug 1992)
 - & Hazel Elizabeth (Betty) Thompson (14 Jun 1935 -)
 - 1.1.1.10.1.1 John Edward Hoppe (17 Jun 1954 - 17 Jun 1954)
 - 1.1.1.10.1.2 Wesley Gene Hoppe (6 Apr 1956 - 17 Jan 1976)
 - 1.1.1.10.1.3a Wendel Jon Hoppe* (5 Mar 1957 -)
 - & Katherine Sue Ellis (3 Aug 1956 -)
 - 1.1.1.10.1.3a.1 Jon Wesley Hoppe (23 Jan 1976 -)
 - 1.1.1.10.1.3a.2 Michelle Kay Hoppe (23 Jan 1976 -)
 - 1.1.1.10.1.3b Wendel Jon Hoppe* (5 Mar 1957 -)
 - & Donna Gail Welborn (5 Sep 1959 -)
 - 1.1.1.10.1.3b.1 Whitley Marie Welborn Hoppe (8 Feb 1989 -)
 - 1.1.1.10.1.3b.2 Ashley Rose Thompson Hoppe (8 Feb 1989 -)
 - 1.1.1.10.1.3b.3 Olivia Anne Daniel Hoppe (12 Mar 1991 -)
 - 1.1.1.10.1.4 Weldon James Hoppe (5 Dec 1958 -)
 - & Paula Ann Ohrt (18 Apr 1957 -)
 - 1.1.1.10.1.4.1 James Christian Hoppe (13 Apr 1986 -)
 - 1.1.1.10.1.4.2 Anna Elizabeth Hoppe (1 Jan 1988 -)
 - 1.1.1.10.1.4.3 Ian Ross Hoppe (21 Jan 1991 -)
 - 1.1.1.10.1.5 Sharla Kay Hoppe (4 Aug 1961 -)
 - & Brian Douglas Rader (8 Sep 1961 -)
 - 1.1.1.10.1.5.1 Brandon James Rader (27 Aug 1987 -)
 - 1.1.1.10.1.5.2 Brianna Kay Rader (27 Sep 1990 -)
- 1.1.1.10.2 Mary Ellen Hoppe (24 Nov 1932 -)
 - & Rex Alonzo Stewart (16 Feb 1930 -)
 - 1.1.1.10.2.1a Bradley Gene Stewart* (27 Jul 1953 -) & Dawn Randall (-)
 - 1.1.1.10.2.1a.1 Bradley Warner Stewart (8 Oct 1976 -)
 - 1.1.1.10.2.1b Bradley Gene Stewart* (27 Jul 1953 -) & Lisa (-)
 - 1.1.1.10.2.1b.1 Benjamin Rex Stewart (25 Sep 1986 -)
 - 1.1.1.10.2.1b.2 Nicholas Charles Stewart (1 Jun 1989 -)
 - 1.1.1.10.2.1b.3 Corey Bryan Stewart (21 May 1992 -)
 - 1.1.1.10.2.2 Bryan Kim Stewart (28 Apr 1957 -)
 - & Lisa Kay Walker (28 Mar 1958 -)
 - 1.1.1.10.2.2.1 Jenna Michelle Stewart (18 Jul 1984 -)
- 1.1.1.10.3 Carol Mae Hoppe (4 Jun 1936 -) & Edwin H. Warner (-)
 - 1.1.1.10.3.1 Scott LaVern Warner (22 Jun 1962 -)
 - 1.1.1.10.3.2 Karen Renae Warner (17 Jun 1964 -)
 - 1.1.1.10.3.3 Steven Todd Warner (26 Dec 1967 -)
- 1.1.1.10.4 Irvin Glen Hoppe (14 Feb 1946 -)
 - & Marlene Elaine Miller (23 May 1947 -)
 - 1.1.1.10.4.1 Jana Lynn Hoppe (8 Feb 1985 -)
- 1.1.1.11 Olive Eleanor (Dolly) Hoppe (14 Oct 1903 - 21 Mar 1989)
- 1.1.1.12 Ross Aaron Hoppe (16 Oct 1906 - 14 Aug 1959)

- 1.1.2 **Louise Dorothea Antoinette Hoppe** (1 Jun 1863 - 3 Apr 1944)
 - & Herman Henry Conerus (28 Apr 1856 - 9 Apr 1919)
 - 1.1.2.1 Sophie Margaretha Conerus (18 Jan 1887 - 26 Mar 1965)
 - 1.1.2.2 Anna Hermiene Conerus (7 Dec 1888 - 13 Dec 1986)
 - & Glen Roe Smith (30 Jul 1888 - 12 Dec 1942)
 - 1.1.2.2.1 Everett Conerus Smith (29 Oct 1914 -)
 - & Grace Thelma Story (27 May 1921 -)
 - 1.1.2.2.1.1 Donald Leroy Smith (10 Sep 1945 -) & (-)
 - 1.1.2.2.1.1.1 Charity Smith (-) & Kates (-)
 - 1.1.2.2.1.1.2 April Smith (-) & Hughes (-)
 - 1.1.2.2.1.1.3 Christopher Smith (-)
 - 1.1.2.2.1.1.4 Benjamin Smith (-)
 - 1.1.2.2.1.2 Gene Roe Smith (17 Sep 1948 -)
 - 1.1.2.2.2 Jean Louise Smith (12 Mar 1919 - 1 Apr 1919)
 - 1.1.2.2.3 Idonna June Smith (19 Jun 1920 - 21 Mar 1960)
 - & Ole Haugen (11 Nov 1911 -)
 - 1.1.2.2.3.1 Donna Olene Haugen (23 May 1942 -) & David Kent (-)
 - 1.1.2.2.3.1.1 Merri Lynn Kent (-) & E. G. Chilcutt (-)
 - 1.1.2.2.3.1.2 Christina Jill Kent (-) & (-)
 - 1.1.2.2.3.1.3 Michael David Kent (-)
 - 1.1.2.2.3.2 Buster Lee Haugen (20 Nov 1945 -) & Fern (26 Dec 1951 -)
 - 1.1.2.2.3.2.1 Chad Lee Haugen (-)
 - 1.1.2.2.4 Dorothy Anne Smith (31 Oct 1923 -) & Ralph Wagers (28 Aug 1916 -)
 - 1.1.2.2.4.1 Karen Louise Wagers (20 Jul 1951 -) & Waldemar Michalski (-)
 - 1.1.2.3 Emma Sophie Caroline Conerus (18 Mar 1892 - 22 Aug 1972)
 - & John David (Dave) Melcher (20 Oct 1896 - ?)
 - 1.1.2.4 Antoinette Anna Wilhelmine (Nettie) Conerus (12 May 1894 - 31 Oct 1985)
 - & Fred K. Hagar (16 Oct 1893 - 1 Feb 1959)
 - 1.1.2.4.1 Fred Joseph Hagar (18 Dec 1923 - 8 May 1933)
 - 1.1.2.5 May Conerus (5 May 1896 - 1 Apr 1897)
- 1.1.3 **August Carl Friedrich Hoppe** (7 Jan 1868 - 17 Jul 1942)
 - & Henrietta (Brasse) Heidelk (5 Nov 1863 - 2 Mar 1936)
 - 1.1.3.1 Sophia Dorothea Louise Heidelk (3 Feb 1885 - 27 Jun 1931)
 - & August G. Schroeder (7 Feb 1879 - 28 Mar 1947)
 - 1.1.3.1.1 Chester Schroeder (5 May 1907 - 17 Jun 1970)
 - & Viola Rahee (11 Jan 1910 - 12 Mar 1985)
 - 1.1.3.1.1.1 Karen Lee Schroeder (24 Jan 1942 -) & McFall (-)
 - 1.1.3.1.1.1.1 Ricky Lee McFall (1 Jun 1959 -) & Liz Grancer (-)
 - 1.1.3.1.1.1.1.1 Richard Lee McFall (12 Oct 1985 -)
 - 1.1.3.1.1.1.2 Randy Lee McFall (10 Feb 1961 -)
 - & Kathy McFerrin (20 Mar 1972 -)
 - 1.1.3.1.1.1.2.1 Kurtis Lee McFall (20 Aug 1979 -)
 - 1.1.3.1.1.1.2.2 Kodi Lee McFall (7 Apr 1990 -)
 - 1.1.3.1.1.1.3 Dana Lee McFall (28 Sep 1969 -)
 - 1.1.3.1.1.2 Ronald D. Schroeder (26 Sep 1948 -)
 - & Kathy Menke (30 Jun 1949 -)
 - 1.1.3.1.1.2.1 Stacy Jo Schroeder (29 Nov 1968 -)
 - & Russell Hennerberg (24 May 1966 -)
 - 1.1.3.1.1.2.2 Chad Ronald Schroeder (26 Oct 1971 -)
 - 1.1.3.1.1.2.3 Dustin Jon Schroeder (11 Mar 1980 -)
 - 1.1.3.1.1.3 Mark Allen Schroeder (23 Aug 1953 - 23 Aug 1953)
 - 1.1.3.1.2 Harold Schroeder (25 May 1910 -) & Leola Haecker (13 Nov 1911 -)
 - 1.1.3.1.2.1 Duane Eugene Schroeder (27 Jan 1935 -)
 - & Lois Mae Thomas (26 Nov 1933 -)

- 1.1.3.1.2.1.1 Mark Allen Schroeder (14 Nov 1956 -)
& Barbara Lohmeyer (15 Oct 1958 -)
 - 1.1.3.1.2.1.1.1 Danielle Ann Schroeder (8 Sep 1989 -)
 - 1.1.3.1.2.1.1.2 Devin Duwane Schroeder (7 Jul 1993 -)
- 1.1.3.1.2.1.2 Robert E. Schroeder (3 Sep 1957 -)
- 1.1.3.1.2.1.3 Diane Kay Schroeder (21 Feb 1964 -)
& Doug Jiskra (11 Dec 1960 -)
 - 1.1.3.1.2.1.3.1 Magen Faye Jiskra (1 Jul 1990 -)
- 1.1.3.1.2.2 Joyce Ann Schroeder (24 Feb 1941 -) & Lee Heidemann (-)
 - 1.1.3.1.2.2.1 Tammy Jo Heidemann (30 Jul 1960 -)
& Dave Hagemeier (-)
 - 1.1.3.1.2.2.2 Julie Heidemann (22 May 1962 -)
& Robert Lambert (31 Aug 1960 -)
 - 1.1.3.1.2.2.2.1 Lindsey Lee Lambert (17 Aug 1990 -)
 - 1.1.3.1.2.2.2.2 Dack Adam Lambert (5 Jan 1992 -)
 - 1.1.3.1.2.2.3 Jarrod Heidemann (11 Dec 1970 -)
 - 1.1.3.1.2.3 Suzanne Kay Schroeder (26 Jan 1946 -)
& Donald Heidemann (12 Aug 1945 -)
 - 1.1.3.1.2.3.1 Todd Allen Heidemann (6 Nov 1964 -)
 - 1.1.3.1.2.3.2 Michelle Lynn Heidemann (6 Jun 1972 -)
 - 1.1.3.1.2.3.3 Wade Christopher Heidemann (28 Jul 1975 -)
- 1.1.3.1.3 Lela Schroeder (25 Feb 1913 -)
& Ralph Dailey (28 Jan 1905 - 17 Feb 1981)
- 1.1.3.1.4a Ruth Schroeder* (24 Feb 1917 -)
& Leslie N. Friesen (4 Aug 1914 - 6 Oct 1964)
 - 1.1.3.1.4a.1 Judith Ann Friesen (27 Nov 1944 -) & Delton L. Nack (-)
 - 1.1.3.1.4a.1.1 Christopher Joel Nack (1 Oct 1967 -)
 - 1.1.3.1.4a.1.2 Jonathan Corey Nack (1 Oct 1967 -) & Jovita Glandorf (-)
 - 1.1.3.1.4a.1.3 Leslie Lawrence Nack (18 May 1970 -)
- 1.1.3.1.4b Ruth Schroeder* (24 Feb 1917 -)
& Rev. Leroy E. Vogel Sr. (18 Oct 1909 - 30 Oct 1984)
- 1.1.3.1.5 Margaret Jean Schroeder (14 Aug 1926 - 27 Mar 1988)
& Gaylord Franklin Darrow (6 Mar 1920 -)
 - 1.1.3.1.5.1a Jon Franklin Darrow* (26 Jun 1946 -)
& Sally Jo Cram (1 Dec 1948 -)
 - 1.1.3.1.5.1a.1 Jessica Marie Darrow (30 May 1967 -)
& Kurt Law (27 Aug 1963 -)
 - 1.1.3.1.5.1a.2 Nathan Jon Darrow (3 Dec 1971 -)
 - 1.1.3.1.5.1b Jon Franklin Darrow* (26 Jun 1946 -)
& Pamela Lynn Gilmore (4 Mar 1948 -)
 - 1.1.3.1.5.2 Carolyn Ruth Darrow (24 Jul 1947 -)
& Dale Robert Fox (11 Jun 1943 -)
 - 1.1.3.1.5.2.1 Franklin Robert Fox (13 Mar 1966 -)
 - 1.1.3.1.5.2.2 Ronald Glenn Fox (29 Dec 1968 -)
 - 1.1.3.1.5.3a Sumner Clifford Darrow* (20 Nov 1948 -)
& Chirley Ann Brotherton (6 Aug 1949 -)
 - 1.1.3.1.5.3a.1 Christopher Len Darrow (19 Sep 1968 -)
 - 1.1.3.1.5.3a.2 Brett Alan Darrow (11 Jun 1971 -)
 - 1.1.3.1.5.3b Sumner Clifford Darrow* (20 Nov 1948 -)
& Beverly Joyce Burch (7 May 1958 -)
 - 1.1.3.1.5.3b.1 Colton Sumner Darrow (13 May 1988 -)
 - 1.1.3.1.5.4 Joan Margaret Darrow (2 Oct 1950 -)
& James Joseph Degrado (30 Jul 1941 -)
 - 1.1.3.1.5.4.1 Justin James Degrado (6 May 1978 -)

- 1.1.3.1.5.5a Barbara Jeanette Darrow* (30 Oct 1952 -)
& Alfred Lewis Gaines (19 Sep 1940 -)
1.1.3.1.5.5.a.1 Alan Lamont Gaines (26 Mar 1976 -)
- 1.1.3.1.5.5b Barbara Jeanette Darrow* (30 Oct 1952 -)
- 1.1.3.1.5.6 Ralph Cyril Darrow (7 Oct 1954 -)
& Jodie Dawn Anderson (23 Oct 1958 -)
1.1.3.1.5.6.1 Melissa Jean Darrow (15 Jul 1980 -)
1.1.3.1.5.6.2 Todd Allen Darrow (15 Jul 1980 -)
- 1.1.3.1.5.7 Rebecca Ann Darrow (24 Sep 1957 -)
& Rondell Lee Wright (19 Oct 1956 -)
1.1.3.1.5.7.1 Jason Paul Wright (17 Nov 1977 -)
1.1.3.1.5.7.2 Erica Leigh Wright (26 Mar 1979 -)
1.1.3.1.5.7.3 Joshua Daniel Wright (1 Sep 1982 -)
1.1.3.1.5.7.4 Shawn Patrick Wright (1 Nov 1985 -)
- 1.1.3.1.5.8 Ramona Faye Darrow (2 Sep 1961 -)
& Enoch Truman (19 Feb 1956 -)
1.1.3.1.5.8.1 Joseph Enoch Truman (25 Dec 1986 -)
1.1.3.1.5.8.2 Jared Benjamin Truman (8 Oct 1989 -)
- 1.1.3.2 Mathilda (Tillie) Heidelk (23 Sep 1887 - Jan 1956)
& Otto J. Zager (21 Dec 1877 - Jan 1951)
 - 1.1.3.2.1 Alvin Zager (30 May 1908 -) & Delma Diekmann (28 Oct 1910 -)
1.1.3.2.1.1 Karen L. Zager (18 Oct 1935 -)
1.1.3.2.1.2 Donovan D. Zager (27 Aug 1937 -)
1.1.3.2.1.3 Garry L. Zager (12 Jan 1942 -)
1.1.3.2.1.4 Dennis L. Zager (15 Feb 1943 -)
1.1.3.2.1.5 Ovid J. Zager (13 Dec 1945 -)
 - 1.1.3.2.2 Harlan Zager (9 May 1915 -) & Evelyn Longan (13 Dec 1923 -)
1.1.3.2.2.1 Terry Lynn Zager (5 Nov 1945 -)
1.1.3.2.2.2 Harla Zager (2 Sep 1947 -) & Cheek (-)
1.1.3.2.2.3 Galen Zager (24 Feb 1951 -)
 - 1.1.3.2.3 Harvey Zager (10 Jan 1918 -) & Wealthy Fasnacht (28 Jul 1918 -)
1.1.3.2.3.1 Robert Daniel Zager (23 Sep 1942 -)
1.1.3.2.3.2 Valerie Jean Zager (25 May 1947 -)
 - 1.1.3.2.4 Verena Zager (16 Jul 1906 -) & Roy R. Carpenter (2 Oct 1903 -)
1.1.3.2.4.1 Marvel J. Carpenter (24 Mar 1932 -) & Meints (-)
 - 1.1.3.2.5 Fern Zager (23 Oct 1910 -) & Ovid Floyd Carpenter (5 Mar 1910 -)
1.1.3.2.5.1 Valjean Carpenter (1933 - 1933)
1.1.3.2.5.2 Gwendolyn Kay Carpenter (1934 - 1934)
1.1.3.2.5.3 Beverly Ruth Carpenter (19 Apr 1936 -) & Jerry W. Hecox (-)
 - 1.1.3.2.6 Lillian Zager (19 Nov 1923 -) & Orville Ehrlich (30 Jul 1915 -)
 - 1.1.3.2.7 Leona Zager (11 Aug 1915 -) & Arnold Diekman (14 Feb 1909 -)
1.1.3.2.7.1 Sandra Jean Diekman (29 Aug 1939 -) & Fuoco (-)
1.1.3.2.7.2 Bonnie Kay Diekman (14 Jul 1946 -) & Tassler (-)
1.1.3.2.7.3 Ruth Marlene Diekman (17 Sep 1949 -) & Wallace (-)
1.1.3.2.7.4 Kathleen Sue Diekman (31 Dec 1950 -) & Herz (-)
- 1.1.3.3 Anna Sophie Marie Hoppe (8 Oct 1890 - 23 Aug 1893)
- 1.1.3.4 Conrad August Henry Hoppe (28 May 1893 - 14 Oct 1979)
& Ida Lena Caroline Grummert (30 Nov 1898 - 8 Dec 1983)
 - 1.1.3.4.1 Orpha Sophie Henrietta Hoppe (19 Jul 1921 -)
& Francis Joseph Jimenez (17 Oct 1921 -)
1.1.3.4.1.1 Francine Susan Jimenez (16 Nov 1952 -)
& Monte Alan Baatz (30 Aug 1951 -)
1.1.3.4.1.1.1 Jessica Nichole Baatz (22 Mar 1973 -)
1.1.3.4.1.1.2 Gretchen Danielle Baatz (10 Jan 1977 -)

- 1.1.3.4.2 Marvin William August Hoppe (23 Apr 1923 - 7 Jul 1977)
& Maxine Lillian Ruhnke (6 Jun 1928 -)
 - 1.1.3.4.2.1 Randall Lee Hoppe (16 Aug 1947 -) & Connie (-)
 - 1.1.3.4.2.2 Nancy Ann Hoppe (7 Mar 1950 -)
& Sidney William Lowe (20 Oct 1949 -)
 - 1.1.3.4.2.2.1 Alex William Lowe (1 Jun 1985 -)
 - 1.1.3.4.2.2.2 Andrew August Lowe (12 Apr 1987 -)
 - 1.1.3.4.2.3 Richard Lynn Hoppe (4 Oct 1951 -)
& Mary Beth Jacobson (16 Sep 1953 -)
 - 1.1.3.4.2.3.1 Nathan Richard Hoppe (24 Jun 1979 -)
 - 1.1.3.4.2.3.2 Kirsten Jill Hoppe (26 Aug 1981 -)
 - 1.1.3.4.2.3.3 Thomas William Hoppe (24 Jan 1984 -)
 - 1.1.3.4.2.3.4 Ross Andrew Hoppe (1 Jul 1986 -)
 - 1.1.3.4.2.4 Brenda Sue Hoppe (5 Mar 1961 -)
& Michael D. Carpenter (21 Jul 1962 -)
 - 1.1.3.4.2.4.1 Mollie Ann Carpenter (30 Sep 1992 -)
 - 1.1.3.4.2.5 Todd Scott Hoppe (2 Jul 1964 -)
- 1.1.3.5 Henry Herman Christian Hoppe (5 Jun 1894 - 20 Jul 1896)
- 1.1.3.6 Eleanora Sophie Charlotte (Nora) Hoppe (27 Apr 1897 - 17 Jan 1970)
& Otto Grummert (31 May 1896 - 19 Jan 1994)
 - 1.1.3.6.1 Adelina Sophie Grummert (10 Feb 1918 -)
& Roy Sollie McArtor (4 Jul 1913 -)
 - 1.1.3.6.1.1 Ronald Roy McArtor (14 Jan 1947 -)
 - 1.1.3.6.1.2 Kenneth Wayne McArtor (13 Oct 1951 -)
& Jacquelin R. Bean (28 Mar 1954 -)
 - 1.1.3.6.1.2.1 Cade McArtor (7 Oct 1985 -)
 - 1.1.3.6.1.2.2 Haley McArtor (14 Apr 1989 -)
 - 1.1.3.6.2 Orland Grummert (1 Oct 1921 - 18 Feb 1986)
& Doris Mae Hamm (15 Feb 1927 -)
 - 1.1.3.6.2.1 David Lee Grummert (12 May 1950 -)
 - 1.1.3.6.2.2 Donald Ray Grummert (15 May 1952 -)
 - 1.1.3.6.2.3 Bradley Lynn Grummert (10 Jan 1957 -)
 - 1.1.3.6.2.4 Linda Marie Grummert (22 Jul 1962 -)
& Perry Allan Trecek (24 Sep 1957 -)
 - 1.1.3.6.2.4.1 Preston Allan Trecek (19 Mar 1982 -)
 - 1.1.3.6.2.4.2 Laurie Marie Trecek (23 Aug 1985 -)
 - 1.1.3.6.2.5 Diane Kay Grummert (31 Aug 1963 -)
& James LeRoy Huber (1 Jun 1958 -)
 - 1.1.3.6.2.5.1 Heather Kay Huber (10 May 1987 -)
 - 1.1.3.6.2.5.2 Travis James Huber (9 Sep 1990 -)
 - 1.1.3.6.3 Dorothy June Grummert (19 Jun 1924 - 23 Jan 1984)
& Dale Lavern Smith (1 Jun 1921 -)
 - 1.1.3.6.3.1 Patricia Ann Smith (25 Sep 1947 -)
& Richard A. Becker (16 Nov 1946 -)
 - 1.1.3.6.3.1.1 Mark Allen Becker (19 Nov 1972 -)
 - 1.1.3.6.3.1.2 Matthew John Becker (28 May 1976 -)
 - 1.1.3.6.3.2 Gary Alan Smith (20 Jan 1951 -)
& Mary Christine Lewis (27 Feb 1951 -)
 - 1.1.3.6.3.2.1 Haley Christine Smith (21 Mar 1979 -)
 - 1.1.3.6.3.2.2 Joseph Ryan Smith (7 Feb 1981 -)
 - 1.1.3.6.3.2.3 Reed Lewis Smith (14 Nov 1987 -)
 - 1.1.3.6.4 Mae Matilda Grummert (12 Oct 1926 -)
& Harold William Hansel (26 Jun 1925 -)
 - 1.1.3.6.4.1 Lucille Mae Hansel (5 Nov 1945 - 17 Feb 1988)
& Richard Megejewski (1 Sep 1943 -)

- 1.1.3.6.4.1.1 Marie Therese Megejewski (3 Jul 1966 -)
- 1.1.3.6.4.1.2 Lisa Renae Megejewski (22 Jul 1967 -)
- 1.1.3.6.4.2 Robert William Hansel Sr. (9 Apr 1947 -)
 - & Frances Ellen Higel (1 May 1947 -)
 - 1.1.3.6.4.2.1 Robert William Hansel Jr. (15 Aug 1967 -)
 - 1.1.3.6.4.2.2 Debra Ellen Hansel (18 Jan 1969 -)
- 1.1.3.7 Emilie (Millie) Hoppe (20 Apr 1900 -)
- 1.1.3.8 Ludwig Cristoph George (Louis) Hoppe (6 Nov 1903 - 12 Aug 1969)
 - & Faith Eileen Renz (29 May 1918 - 1978)
 - 1.1.3.8.1a Gretchen Louise Hoppe* (16 Jul 1944 -)
 - & Dallas Mcduffee (26 Jun 1945 -)
 - 1.1.3.8.1a.1 David Dallas Mcduffee (2 Oct 1969 -)
 - 1.1.3.8.1a.2 Scott Alan Mcduffee (8 Jun 1972 -)
 - 1.1.3.8.1b Gretchen Louise Hoppe* (16 Jul 1944 -) & Charles R. Boling (-)
 - 1.1.3.8.2 William Louis Hoppe (13 Jan 1946 -)
 - & Angie Krueger (16 Jun 1950 -)
 - 1.1.3.8.2.1 Lisa Jean Hoppe (11 Feb 1969 -)
 - 1.1.3.8.2.2 William Louis Hoppe (27 Aug 1971 -)
 - 1.1.3.8.2.3 Dale Hoppe (12 Jan 1973 -)
 - 1.1.3.8.3 Orrin Dean Hoppe (24 Jan 1947 -) & Karen (-)
 - 1.1.3.8.3.1 Sheila Kay Hoppe (16 Apr 1972 -)
 - 1.1.3.8.3.2 Christopher Hoppe (11 Jun 1974 -)
 - 1.1.3.8.4 Lyle Eugene Hoppe (10 Nov 1948 -) & Judy (31 Jan 1951 -)
 - 1.1.3.8.4.1 Peter Hoppe (2 Jan 1972 -)
 - 1.1.3.8.4.2 Jill Hoppe (26 Jul 1974 -)
 - 1.1.3.8.4.3 Louie Hoppe (31 Jan 1976 -)
 - 1.1.3.8.4.4 Phillip James Hoppe (19 Feb 1977 -)
 - 1.1.3.8.4.5 Dennis Hoppe (2 Aug 1979 -)
 - 1.1.3.8.4.6 Amy Hoppe (2 Jul 1982 -)
 - 1.1.3.8.5 Mary Ellen Hoppe (26 Apr 1951 -) & Richard Liss (12 Dec 1946 -)
 - 1.1.3.8.5.1 Gregory Liss (7 Jul 1970 -)
 - 1.1.3.8.5.2 Kerry Liss (16 Aug 1972 -)
 - 1.1.3.8.5.3 Kelly Liss (22 May 1981 -)
 - 1.1.3.8.6 Martha Hoppe (20 Nov 1957 -)
- 1.1.4 **Heinrich Albert Hoppe** (19 Apr 1871 - 13 Sep 1935)
 - & Marie Fangemeier (18 May 1876 - 15 Mar 1959)
 - 1.1.4.1 Alvin Hoppe (17 Apr 1899 - 1 Sep 1902)
 - 1.1.4.2 Henri Edwin Hoppe (27 Jun 1903 - 14 Sep 1988)
 - & Florine Theresa Hoeger (27 May 1904 - 1966)
 - 1.1.4.2.1 James Martin Hoppe (1 Feb 1927 -)
 - & Betty Marie Smith (14 Apr 1924 -)
 - 1.1.4.2.1.1 Patricia Jean Hoppe (28 Jan 1952 -)
 - 1.1.4.2.1.2 David Henri Hoppe (6 Jul 1953 -)
 - & Lynda Gail Ball (7 Aug 1951 -)
 - 1.1.4.2.1.2.1 Erin Jeanne Hoppe (9 Aug 1981 -)
 - 1.1.4.2.1.2.2 Eric Brent Hoppe (27 Apr 1983 -)
 - 1.1.4.2.1.3 Donald Keane Hoppe (6 Jul 1953 -)
 - & Marilyn Naomi Milake (17 Jun 1954 -)
 - 1.1.4.2.1.3.1 Heather Hisako Hoppe (4 May 1980 -)
 - 1.1.4.2.1.3.2 Allyson Akeko Hoppe (26 Jun 1982 -)
 - 1.1.4.2.1.4 Steven Paul Hoppe (7 Feb 1955 -)
 - & Michelle Dillon (25 Sep 1955 -)
 - 1.1.4.2.1.4.1 Nicole Michelle Hoppe (27 Oct 1982 -)
 - 1.1.4.2.1.4.2 Renae Marie Hoppe (23 Jan 1984 -)
 - 1.1.4.2.1.4.3 James Henri Hoppe (16 Mar 1990 -)

- 1.1.4.2.2 Eugene Edwin Hoppe (21 Mar 1931 - 28 Feb 1937)
 - 1.1.4.2.3 Patricia Ann Hoppe (26 Feb 1934 -)
& Joseph C. Andersen (12 Feb 1927 -)
 - 1.1.4.3a Marie Catharine Hoppe* (9 Aug 1903 - 24 Jan 1971)
& Chandler Thompson (-)
 - 1.1.4.3a.1 Dorothy Thompson (-) & Melvin Krank (-)
 - 1.1.4.3b Marie Catharine Hoppe* (9 Aug 1903 - 24 Jan 1971) & Bill Brewer (-)
 - 1.1.5 **Sabrea Sophie Hoppe** (7 Feb 1875 - 9 Jan 1946)
& George Sellenrick (29 Oct 1873 - 4 Oct 1955)
 - 1.1.5.1a Arthur August Gottlieb Sellenrick* (5 Nov 1899 - 12 Apr 1970)
& Gertrude Sohn (11 Feb 1900 - 31 Mar 1956)
 - 1.1.5.1b Arthur August Gottlieb Sellenrick* (5 Nov 1899 - 12 Apr 1970)
& Beth (22 Jul 1910 - 10 Mar 1983)
 - 1.1.5.2 Alma Louise Ida Sellenrick (25 Sep 1901 -)
& Arthur David Zellner (9 Mar 1904 -)
 - 1.1.5.2.1 Patricia Evelyn Zellner (25 Jun 1923 -)
& John Robert Massey (18 Sep 1922 -)
 - 1.1.5.2.1.1a Johnette Cheryl Massey* (24 Sep 1947 -)
& Mike Plantz (15 Dec 1947 -)
 - 1.1.5.2.1.1a.1 Kristen Greer Plantz (22 Feb 1974 -)
 - 1.1.5.2.1.1b Johnette Cheryl Massey* (24 Sep 1947 -)
& Robert Hodgkin (19 Jul 1947 -)
 - 1.1.5.2.1.1b.1 Whitney Ariene Hodgkin (6 Oct 1986 -)
 - 1.1.5.2.1.2 Robin Denise Massey (15 Sep 1951 -)
& John O'Dell (2 Apr 1951 -)
 - 1.1.5.2.1.2.1 Nickolas Adam O'Dell (18 Sep 1981 -)
 - 1.1.5.2.1.2.2 Kelly Lee O'Dell (12 Aug 1983 -)
 - 1.1.5.3 Herbert Henry Herman Sellenrick (25 Mar 1904 -)
& Eleanor (Gardetto) Chiarenza (17 Mar 1924 -)
 - 1.1.5.3.1 Tom Chiarenza (22 Sep 1946 -)
& Chanid (Richards) Daniels (3 Jul 1948 -)
 - 1.1.5.3.1.1 Kim Daniels Chiarenza (24 Feb 1967 -)
 - 1.1.5.3.1.2 Angela Chiarenza (13 Jun 1982 -)
 - 1.1.5.4 Clarence Louie Frederick Sellenrick (4 Sep 1906 - 16 Dec 1988)
& Helen (- Aug 1979)
 - 1.1.5.5 Raymond Gerald Leslie Sellenrick (27 Apr 1909 -)
& Irene Bailey (29 May 1912 -)
 - 1.1.5.6 Sophia Evelyn Henrietta Sellenrick (4 Aug 1910 - 18 May 1980)
& Arvid Melby (26 Feb 1905 - 9 Feb 1965)
 - 1.1.5.6.1 David Melby (8 Jun 1942 -)
 - 1.1.5.7 Wilmer Leo Emil Sellenrick (15 Feb 1912 -)
& Norma Ellen Slaven (23 Jun 1924 -)
 - 1.1.5.7.1 Gary Leo Sellenrick (18 Oct 1946 -)
& Patricia Lynn Stricker (15 Dec 1949 -)
 - 1.1.5.7.1.1 Shane Leo Sellenrick (28 Aug 1975 -)
 - 1.1.5.7.1.2 Denise Dawn Sellenrick (27 Oct 1977 -)
 - 1.1.5.7.1.3 Jeffrey David Sellenrick (12 May 1980 -)
 - 1.1.5.7.2 Kathleen Gail Sellenrick (24 Nov 1949 -) & Dean Hollatz (4 Jul 1943-)
 - 1.1.5.7.2.1 Elizabeth Tallasen Hollatz (22 Aug 1981 -)
 - 1.1.5.7.2.2 Allyson Louise Hollatz (16 Jun 1983 -)
 - 1.1.5.7.3 Howard Paul Sellenrick (9 Feb 1955 -)
- 1.2 **Hans Heinrich Friedrich Konrad Hoppe** (12 Dec 1831 - ?)
& Engel Dorothee Karoline Bremer (- 6 Oct 1894)
 - 1.2.1 **Heinrich Friedrich August Hoppe** (3 Oct 1875 - 17 May 1932)
& Jacobina (Benchen) (19 Oct 1880 - 30 Nov 1961)

- 1.2.1.1 Theodor H. Hoppe (21 Aug 1907 - 6 Dec 1938)
& Ruth C. Gillen (17 Jul 1907 -)
- 1.2.1.1.1 R. Carolyn Hoppe (11 Jul 1930 -) & Robert W. Klump (16 Sep 1925 -)
 - 1.2.1.1.1.1 Christopher A. Klump (29 Nov 1958 -)
& Kim A. Lesser (17 Jan 1963 -)
 - 1.2.1.1.1.1.1 Leah J. Klump (28 Dec 1989 -)
 - 1.2.1.1.1.1.2 Jesse R. Klump (26 May 1991 -)
- 1.2.1.1.1.2 Jennifer R. Klump (12 Feb 1964 -) & Joel E. Mcfadden (-)
- 1.2.1.1.2 Fred T. Hoppe (28 Jul 1936 -) & Melinda Young (-)
 - 1.2.1.1.2.1 Kersten Hoppe (-)
 - 1.2.1.1.2.2 Elizabeth Hoppe (-)
 - 1.2.1.1.2.3 Theodor Hoppe (-)
 - 1.2.1.1.2.4 Eric Hoppe (-)
- 1.2.1.2 Henry F. Hoppe (5 Apr 1909 -)
& Myrtle Spatcher (25 Jun 1913 - 17 May 1988)
 - 1.2.1.2.1 Mary Ann Hoppe (25 Dec 1940 -) & David Hughes (27 May 1936 -)
 - 1.2.1.2.1.1 Michelle Anne Hughes (27 Apr 1967 -)
& James B. Stark (14 Dec 1959 -)
 - 1.2.1.2.1.2 David Henry Hughes (30 Apr 1969 -)
& Heather Freeman (30 Nov 1969 -)
 - 1.2.1.2.1.3 Theodor Hugh Hughes (30 Apr 1969 - 6 Oct 1971)
 - 1.2.1.2.1.4 Mark S. Hughes (1 Dec 1971 -)
 - 1.2.1.2.2 Richard H. Hoppe (29 Mar 1946 -)
& Florence Christine Fisher (13 Mar 1946 -)
 - 1.2.1.2.2.1 Kimberly Anne Hoppe (1 Dec 1972 -)
 - 1.2.1.2.2.2 Scott Andrew Hoppe (2 Apr 1974 -)
 - 1.2.1.2.2.3 Cheryl Lynn Hoppe (2 Jul 1978 -)
 - 1.2.1.2.2.4 Matthew Curtis Hoppe (21 Nov 1981 -)
- 1.2.1.3 Fred W. Hoppe (10 Mar 1916 -) & Doris A. L. Hüelsenbeak (6 Apr 1918 -)
 - 1.2.1.3.1 Louise M. Hoppe (28 Jul 1948 -) & Donald Harclerode (26 Jan 1948 -)
 - 1.2.1.3.1.1 Jason R. Harclerode (17 Mar 1975 -)
 - 1.2.1.3.1.2 Erik Jon Harclerode (24 May 1979 -)
 - 1.2.1.3.2 Margaret L. Hoppe (6 Nov 1950 -)
- 1.3 **Heinrich Wilhelm August Hoppe** (27 Dec 1838 - ?)
& Engel Dorothea Justine Böger (28 Jul 1841 - ?)
 - 1.3.1 **Phillip Heinrich August Hoppe** (18 Jun 1867 - 1937)
& Ida Luise Friderike Kauke (14 Nov 1875 - 4 Jun 1941)
 - 1.3.1.1 Alfred Hoppe (19 Jul 1900 - 15 Apr 1982)
& Margret Garms (5 Oct 1902 - 10 Oct 1984)
 - 1.3.1.1.1 Alfred Hoppe (5 Mar 1935 -) & Gerda Lütjen (2 Nov 1934 -)
 - 1.3.1.1.1.1 Karen M. Hoppe (26 Nov 1959 -)
& Ralph Hohenleitner (22 Aug 1957 -)
 - 1.3.1.1.1.1.1 Jessica Hohenleitner (26 Jul 1992 -)
 - 1.3.1.1.1.2 Lisa M. Hoppe (2 Feb 1961 -) & Craig Boettger (9 Apr 1959 -)
 - 1.3.1.1.1.3 Christina M. Hoppe (13 Nov 1964 -)
& Frank Hamedl (5 Aug 1957 -)
 - 1.3.1.1.1.4 Eric A. Hoppe (8 Oct 1966 -)
 - 1.3.1.1.1.5 Stephen A. Hoppe (3 Oct 1968 -)
 - 1.3.1.2 Helmuth Hoppe (1902 - 1983) & Frieda (1902 -)
 - 1.3.1.2.1 Brigitta Hoppe (19 Nov 1932 -)
 - 1.3.1.3 Adolf Friedrich Walter Hoppe (8 Aug 1908 - 25 Mar 1945)
& Auguste Erna Hanna Weiberg (26 May 1908 -)
 - 1.3.1.3.1 Burkhard Hoppe (11 Mar 1939 -) & Gertrud Fröschl (18 Jul 1949 -)
 - 1.3.1.3.1.1 Gerald Hoppe (5 May 1972 -)
 - 1.3.1.3.1.2 Anja Hoppe (5 Aug 1977 -)

NOTES

ADDRESS LIST

ANDY	ADDIE	RT. 3	SPENCER, IN 47460	812-876-1027
ESTHER J.	ADDIE	1916 CRYSTAL BAY DRIVE E.	PLAINFIELD, IN 46168	317-839-2710
LEE	ADDIE	2020 FOWLER PLACE	MT. VERNON, WA 98273	206-428-5905
RONALD	ADDIE	7555 GOAD HOLLOW RD.	MARTINSVILLE, IN 46151	
PATRICIA A.	ANDERSON	355 VISTA LINDA	MILL VALLEY, CA 94941	
SHEILA	ATHERTON	7745 GOAT HOLLOW RD.	MARTINSVILLE, IN 46151	
PATRICIA	BECKER	RT. 1 BOX 35	CLATONIA, NE 68328	
GRETCHEN	BOLING	5580 W. 74TH AVE.	ARVADA, CO 80003	303-429-8272
JAMES	BROWN	6552 TORVEND RD. N.E.	SILVERTON, OR 97381	
JUDITH	BROWN	224 BROWN PLACE	ST. HELEN'S, OR 97051	503-397-4201
KAREN	BRUNING	RR1 #18A	PHILLIPSBURG, KS 67661	913-543-5563
PAMELA	BRUNKE	728 ILLINOIS	SHERIDAN, WY 82801	
JOY	CAPLES	11011 W. 69TH ST.	SHAWNEE, KS 66203	913-268-4859
BRENDA	CARPENTER	3706 SOUTH 83RD ST. CIR.	LINCOLN, NE 68506	402-483-4880
SHAWN	CARTRIGHT	6631 LIBERTY VALLEY	KATY, TX 77449	
TOM	CHIARENZA	346 BLUE CAVERN POINT	LONG BEACH, CA 90803	310-494-8768
MERRI	CHILCUTT	4407 SHELBY ROAD	LYNWOOD, WA 98037	
BARBARA	CONRAD	10862 CONETREE TRAIL	GRASS VALLEY, CA 95945	
MARGIE	DAHLGRAN	RT. 1 BOX 45	RIVERTON, IA 51650	712-387-5161
LELA L.	DAILEY	1201 WEST B ST.	NORTH PLATTE, NE 69101	
LILLIAN	EHRlich	106 NO. 6TH ST. SUITE 208	BEATRICE, NE 68310	
TERRY	GANDY	6536 GUMWOOD RD.	LAS VEGAS, NV 89108	
MAE	HANSEL	2124 SCOTT AVE.	LINCOLN, NE 68506	402-489-7090
JENNIFER K.	HASH	2075 LEWIS DRIVE	COLUMBUS, IN 47201	
JONATHAN	HASH	524 PATTERSON RD.	COLUMBUS, IN 47201	
LINDA L.	HASH	2075 LEWIS DRIVE	COLUMBUS, IN 47201	
BUSTER	HAUGEN	1450 W. WALNUT	ALBANY, OR 97321	
ROBIN	HAYS	6-BURESS ST. APT. 606	HOUSTON, TX 77022	713-699-9232
BEVERLY	HECOX	514 N. 12TH	BEATRICE, NE 68310-3051	
JOHNETTE	HODGIN	15319 SEAHORSE	HOUSTON, TX 77062	713-480-7421
KATHLEEN	HOLLATZ	2901 FORMAY AVE.	GRAND JUNCTION, CO 81504	303-245-6845
ALFRED	HOPPE	13 TIMBER POINT ROAD	EAST ISLIP, NY 11730	516-581-8685
BETTY	HOPPE	BOX 123	FARNAM, NE 69029	308-569-2324
BURKHARD	HOPPE	BIRKENSTR. 1	D-86511 SCHMIECHEN, GERMANY	49-8206-6021
DAVID	HOPPE	3633 FABERGE	SACREMENTO, CA 95825	
DAVID H.	HOPPE	1154 N. CYPRESS AVE.	ONTARIO, CA 91762	
DONALD K.	HOPPE	1013 RASHFORD DR.	PLACENTIA, CA 92670	
DR. JERRY	HOPPE	4337 WEST AVE. L-2	QUARTS HILL, CA 93536	
EDWIN H.	HOPPE	HC 70 BOX 79C	FARNAM, NE 69029	308-569-2427
EDWIN I.	HOPPE	BOX 53	AGRA, KS 67621	913-638-2261
FRED	HOPPE	RT. 1 BOX 86	PHILLIPSBURG, KS 67661	913-638-2422
FRED W.	HOPPE	9 JAY ROAD	CHATHAM, NJ 07928	
GLEN	HOPPE	BOX 165	DONIPHAN, NE 68832-0165	402-845-2719
HERBERT W.	HOPPE	RT. 1 BOX 81	PHILLIPSBURG, KS 67661	
JAMES	HOPPE	1533 AMBER CT.	ONTARIO, CA 91762	909-984-4139
JON	HOPPE	8701 IOWA SE	HURON, SD 57350-2818	605-352-5078
LARRY	HOPPE	2615 2E COLUMBIA LAKES DR.	COLUMBIA, IL 62236	618-281-6498
LARRY, II	HOPPE	P.O. BOX 1433	CEDAR RIDGE, CA 95924	
LYLE	HOPPE	RT. 2 BOX 189	ALBION, NE 68620	
MARTHA	HOPPE	5210 COOPER AVE.	LINCOLN, NE 68506	402-486-3304
MICHAEL	HOPPE	P.O. BOX 427	GLENELLEN, CA 95442	
MICHELLE	HOPPE	8701 IOWA SE	HURON, SD 57350-2818	605-352-5078
MRS. MARVIN	HOPPE	1018 M ST.	FAIRBURY, NE 68352	402-729-5187
PATRICIA J.	HOPPE	1533 AMBER CT.	ONTARIO, CA 91762	
RANDALL	HOPPE	405 E. MULBERRY AVE.	BEATRICE, NE 68310	402-223-2717
RICHARD	HOPPE	1815 G ST.	FAIRBURY, NE 68352	402-729-2316
STEVEN P.	HOPPE	1785 ELM RD.	CONCORD, CA 94519	
TODD S.	HOPPE	6401 VINE ST. # 160	LINCOLN, NE 68505	402-466-8941
WELDON	HOPPE	RT. 1 BOX 110	COLON, NE 68018	402-647-4705
WENDEL	HOPPE	84 EAGLE ROCK CIRCLE	THE WOODLANDS, TX 77381	713-292-0147
WILLIAM	HOPPE	1600 SW 112TH RT. 6	LINCOLN, NE 68532	402-438-2037
DIANE	HUBER	1118 MAPLE	FAIRBURY, NE 68352	
APRIL	HUGHES	1856 CSGP PO BOX 6132	APO AE 09012	
ORPHA	JIMENEZ	5801 GLADSTONE	LINCOLN, NE 68507-1629	402-466-7847
CHARITY	KATES	RT. 2 BOX 88A-1	MILTON FREEWATER, OR 97862	
DONNA	KENT	4743 PATRICIA NE	SALEM, OR 97305	
MICHAEL	KENT	4743 PATRICIA NE	SALEM, OR 97305	
JACK	KIRBY	2215 W. BLOOMFIELD RD.	BLOOMINGTON, IN 47401	
JAMES	KIRBY	1016 W. 5TH	BLOOMINGTON, IN 47401	
MARLIN	KIRBY	26205 SW 124TH CT.	NARANJA, FL 33032	

VIOLA	KIRBY	8070 HARMONY RD.	BLOOMINGTON, IN 47401	
WAYNE	KIRBY	2534 SKYLARK DRIVE	OCEANSIDE, CA 92054	
WILLIAM	KIRBY	1160 W. CEDAR BLUFF	BLOOMINGTON, IN 47401	
TYRA	KLING	P.O. BOX 150	ST. HELENS, OR 97051	
MARTIN KNAPPER		2075 MOONBEAM	PLACERVILLE, CA 95667	
TOMI	LaBADIE	11175 RAMSEY BLVD.	GOLD HILL, OR 97525	503-855-9899
CONNIE	LEWIS	22 FLORA STREET	HAVERHILL, MA 01830	
GEORGE, III	LEWIS	176 HIGH STREET	CHELMSFORD, MA 01824	
MARY	LISS	#1 HILLCREST	KEARNEY, NE 68847	308-236-6762
NANCY	LOWE	3520 WILDBRIAR LANE	LINCOLN, NE 68516	402-421-9400
PATRICIA	MASSEY	26185 ROCKVILLE ROAD	LOUISBURG, KS 66053	913-837-2854
ADELINA	McARTOR	BOX 91	OWENSBURG, IN 47453	
KENNETH	McARTOR	P.O. BOX 2803	RALEIGH, NC 27602	
KAREN	McFALL	701 SO. 46TH ST.	LINCOLN, NE 68510	402-483-1097
RANDY	McFALL	723 JACARANDA	LINCOLN, NE 68521	402-474-0758
MARVEL	MEINTS	212 E. ENDICOTT	PLYMOUTH, NE 68424	
DAVID	MELBY	P.O. BOX 508	LEAVENWORTH, KS 66048	913-651-0772
BOB	MERRITT	1310 SOUTH 346TH	AVOCA, NE 68307	
KERRY	MERRITT	24752 VIA BALBOA	LAGUNA HILLS, CA 92653	
ROGER	MERRITT	115 NORTH 50TH	OMAHA, NE 68132	402-421-9400
STEVEN	MERRITT	3957 DUKE DRIVE	LAKE HAVISU CITY, AZ 86403	
KAREN	MICHALSKI	15465 SW SANDPIPER LANE	BEAVERTON, OR 97006	
JANET	NEASE	605 JUPITER	SALINA, KS 67401	913-825-7845
ROBIN	O'DELL	1417 E. FRONTIER LANE	OLATHE, KS 66062	913-780-0915
FRED	OTIS	2441 BELMONT BLVD.	SALINA, KS 67401	913-825-7405
JIM	OTIS	2103 NORTHRIDGE	HUTCHINSON, KS 67501	316-663-9023
JOHN H.	OTIS		AGRA, KS 67621	913-638-2838
MILDRED	OTIS	BOX 187	AGRA, KS 67621	913-638-2222
VONA	PARKER	10434 MONROE	OMAHA, NE 68127	402-331-3926
LISA	POTTS	7277 W. STIMEL ROAD	SALINA, KS 67401	
MARIE	POWELL	1621 ORO AVENUE	RIVIERA, AZ 86442-8021	
MESHELLE	POWELL	753 SOUTH MAIN	SHERIDAN, WY 82801	
SHARLA	RADER	BOX 266	HICKMAN, NE 68372	402-792-9322
ARTIS	RICE	19730 S.W. SHIRE CT.	ALOHA, OR 97006	
HAROLD	SCHROEDER	R. 1 BOX 89	JANSEN, NE 68377	
RON	SCHROEDER	RR 2 BOX 119	BEATRICE, NE 68310	307-674-8196
GARY	SELLENRICK	115 RICE AVENUE	SHERIDAN, WY 82801	402-674-8196
HERBERT	SELLENRICK	P.O. BOX 1213	YUCAIPA, CA 92399-1213	909-795-5187
HOWARD	SELLENRICK	P.O. BOX 544	EVANSTON, WY 82930	307-789-9849
RAYMOND	SELLENRICK	P.O. BOX 593	YUCAIPA, CA 92399	909-797-2232
WILMER	SELLENRICK	636 1/2 BROKEN SPOKE	GRAND JUNCTION, CO 81504	
LEA	SHERFIELD	352 W. DITTEMORE RD.	BLOOMINGTON, IN 47404	
CHRISTOPHER	SMITH	RT. 2 BOX 204	MILTON FREEWATER, OR 97862	
DALE	SMITH	106 10TH ST.	FAIRBURY, NE 68352	
DONALD	SMITH	P.O. BOX 582	BENTON CITY, WA 99320	
EVERETT	SMITH	482 HARRISON STREET	LEBANON, OR 97355-2718	
GARY	SMITH	13330 W. 113TH	OVERLAND PARK, KS 66210	
BRAD	STEWART	6429 MANTILLO CREEK RD.	MECHANICSVILLE, VA 23111	
BRYAN	STEWART	P.O. BOX 1166	TIJERAS, NM 87059-1166	
MARY	STEWART	4 STORNOWAY LANE	HIJERAS, AR 72739	501-876-6804
HOPE	SUMMERS	2312 BEAUMONT	BLOOMINGTON, IN 47401	
LINDA	TRECEK	RR 3 BOX 435	AGENDA, KS 66930	
LYNN	VEASEY	RT. 2 BOX 124A	AYNOR, SC 29511	803-358-0566
MRS. RUTH S.	VOGEL	RR 1 BOX 135	WYKOFF, MN 55990-9741	
DOROTHY	WAGERS	2190 WOODSAPE COURT SE	SALEM, OR 97306	
CAROL	WARNER	3706 EAST EASTER DRIVE	LITTLETON, CO 80122	303-771-3210
SCOTT	WARNER	2977 GRAPEWAY	DENVER, CO 80222	
TONY	WERTZ	6913 WELSH CIRCLE	LAS VEGAS, NV 89108	
DAWN	WRIGHT	12 GLEN CT.	MOORESVILLE, IN 46158	317-831-2481
ALVIN	ZAGER	P.O. BOX 186	STAPLEHURST, NE 68439	
ALMA	ZELLNER	26195 ROCKVILLE ROAD	LOUISBURG, KS 66053	913-837-4429

REFERENCES

1. Excerpts from "Hannover (region, Germany)," *Microsoft ®Encarta*, ©1993 Microsoft Corporation, ©1993 Funk & Wagnall's Corporation
2. Excerpts from "Hannover (city, Germany)," *Microsoft ®Encarta*, ©1993 Microsoft Corporation, ©1993 Funk & Wagnall's Corporation
3. Heinrich Welge, *Hohenbostel am Deister*, Hannover, 1988
4. Sophie (Meier) Hoppe, handwritten notes in her Bible
5. B. W. Bathe, *Seven Centuries of Sea Travel*, Tudor Publishing, New York, New York, 1973
6. Louise (Hoppe) Conerus, "My Trip from the Old Country," personal recollections
7. Nettie (Conerus) Hagar, personal recollections
8. Excerpts from "Homestead Laws," *Microsoft ®Encarta*, ©1993 Microsoft Corporation, ©1993 Funk & Wagnall's Corporation
9. see Note 6
10. A. V. Pease, "A Former Fairburian Looks Backward," *The Fairbury Journal*, date unknown
11. *St. Paul United Church of Christ 90th Anniversary History*, Jansen, Nebraska, September 10, 1972
12. see Note 7

